

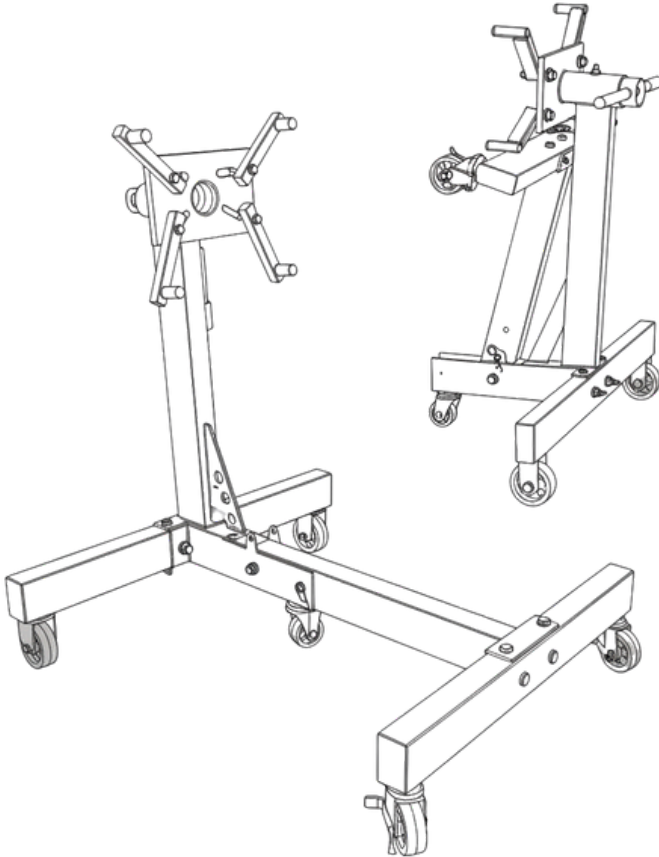
# Owners Manual

Product Code: TQ06-0200

**MADE FOR THE  
TRADE**

**TQ TRADEQUIP**  
the trusted brand in equipment

**680KG FOLDING  
ENGINE STAND**



Capacity	Net Weight	Gross Weight	Size (Unfolded) L x W x H	Size (Folded) L x W x H
680 KG	32.5 KG	33.40 KG	1000 x 800 x 1150mm	560 x 800 x 1150mm

**TQB**

TQB Brands Pty Ltd

[www.tqbbrands.com.au](http://www.tqbbrands.com.au)



# SAFETY OPERATING INSTRUCTIONS



Safety glasses must be worn when operating this equipment



Long loose hair must be contained when operating this equipment.



Safety footwear must be worn when operating this equipment.



Close fitting/protective clothing must be worn when operating this equipment.



Rings and jewelry must not be worn when operating this equipment

## WARNING

### IMPORTANT: READ ALL INSTRUCTIONS BEFORE USE



Read and fully understand all instructions, warnings, and safety information in this manual before installing, operating, maintaining, or servicing this equipment.

Do not allow anyone to install, operate, maintain, or service this equipment unless they have first read this entire manual and clearly understand its contents and the safe operation of the equipment.

Failure to follow any instruction or safety precaution in this manual could result in serious injury or death to the operator or bystanders, as well as damage to the equipment or property.

Whilst every effort has been made to ensure accuracy of information contained in this manual, the TQB Brands Pty Ltd policy of continuous improvement determines the right to make modifications without prior warning.

Store this manual in a convenient, accessible location for future reference by all users.



Maintenance Required



PPE Required



Pinch Hazards

## CONTENTS

SAFETY OPERATING INSTRUCTIONS	PAGE 3
MAINTENANCE & STORAGE	PAGE 6
OPERATION	PAGE 7
ASSEMBLY	PAGE 9
PARTS DIAGRAM	PAGE 10
WARRANTY	PAGE 11



# SAFETY OPERATING INSTRUCTIONS

## OPERATIONAL SAFETY

**WARNING – Failure to follow these instructions could result in serious injury or death to the operator or bystanders, as well as damage to the equipment or property.**

- **Inspect before each use** – Ensure the stand is in good working condition. Check for cracks, bends, wear, loose parts, or damage. Replace or repair any damaged components immediately using only genuine TQB Brands recommended parts. Use of unauthorised parts may create hazards and will void the warranty.
- **Secure the stand** – Ensure the legs are fully unfolded, locked in position with the respective pins and R-clips, and the stand is stable before any load is applied. Use only with legs folded down (unfolded) and pinned securely.
- **Prepare the work area** – Position the stand in a clean, well-lit, suitable workspace. Keep the area tidy and free of unrelated tools, materials, or obstructions. Use only on a firm, level, stable surface capable of supporting the stand and the full 680 kg load. Ensure the floor is not slippery; wear appropriate non-slip footwear and maintain good balance and footing at all times.
- **Keep bystanders safe** – Ensure all non-essential persons maintain a safe distance while the stand is in use or loaded.
- **Mount the load correctly** – Lock the mounting plate/head in the desired position using the locking pin before attaching any load. Consult the engine/vehicle manufacturer for recommended mounting points and centre of gravity. Centre the load precisely on the mounting plate and secure it firmly using appropriate bolts/fasteners. Do not exceed the rated capacity of 680 kg under any circumstances.
- **Handle mounted loads carefully** – When an engine is mounted, support/take the full weight of the load using the handle or gearbox (if equipped) before removing the locking pin. Confirm the stand and load are completely stable before proceeding with any rotation, adjustment, or work.
- **Moving the loaded stand** – To relocate a loaded stand, steady the load, push gently from behind the main post/column so the castor wheels lead the movement. Ensure the travel path is strong, even, level, unobstructed, and free of cracks, slopes, or hazards capable of supporting the combined weight.

### DO NOT:

- Pull the stand backwards or push it from the side – this can cause sudden tipping.
- Concentrate heavy portions of the load to one side, end, or off-centre – this can shift balance unexpectedly, leading to tipping, severe injury, or damage.
- Use the stand if it is damaged, worn, or operates abnormally.
- Allow untrained or unauthorised persons to operate or approach the stand.
- Exceed the 680 kg rated capacity or use for any purpose other than supporting and rotating engines/loads as intended.
- Rotate or adjust the load without first ensuring full stability and weight support.



# SAFETY OPERATING INSTRUCTIONS

## ROTATIONAL SAFETY

**WARNING – Rotating a mounted load, especially large or top-heavy engines, can create sudden imbalance, leading to tipping of the stand, loss of control, serious injury or death to the operator or bystanders, and damage to equipment or property. Exercise extreme caution at all times during rotation.**

- **Ensure proper balance before rotation** — Always consult the vehicle or engine manufacturer for the engine's centre of gravity and recommended mounting points. Align the load's centre of gravity as closely as possible with the rotational axis of the mounting head assembly. Centre the load precisely on the mounting plate and secure it firmly. Off-centre or unbalanced loads can cause unpredictable tipping or difficulty in rotation.
- **Preparation for rotation** — Confirm the stand is on a firm, level surface with legs fully unfolded, pinned, and stable. Lock all casters (if equipped with brakes) before rotating to prevent unintended movement. Ensure the stand and load are completely stable with no signs of wobble or shifting.

### Safe rotation procedure

- Grasp the hand crank (or geared handle) firmly.
- Rotate slowly and deliberately — never apply sudden or excessive force.
- Always stand behind the crank end (handle side) of the stand during rotation.
- Maintain constant observation of the castors/wheels and the overall stability of the stand and load.
- **DANGER:** If any indication of instability, tipping, unusual resistance, shifting of the load, or movement of the castors occurs, STOP IMMEDIATELY, re-support the load if necessary, and re-balance or readjust before continuing.
- Additional precautions — Do not rotate if the load appears top-heavy, unbalanced, or exceeds the 680 kg rated capacity. Rotate only as needed for access, and lock the mounting head in position after achieving the desired angle.

### DO NOT:

- Rotate the load if it is unbalanced, off-centre, or improperly secured.
- Stand in front of, beside, or under the load during rotation — stay behind the crank end to minimise injury risk if tipping occurs.
- Force rotation if it binds or requires excessive effort — this indicates imbalance or a problem; stop and correct.
- Allow untrained persons to rotate the stand.
- Use the stand for rotation if damaged or if prior shock loading has occurred without inspection.



#### PINCH/CRUSH HAZARD

This Engine Stand has moveable components that can crush and pinch.  
Keep fingers and hands away from pinch points when operating.

# ASSEMBLY, OPERATION, PREVENTATIVE MAINTENANCE

## PROHIBITED ACTIONS

**DANGER – The following actions are strictly prohibited. Engaging in any of these could result in sudden tipping, loss of load control, crushing injuries, serious injury or death to the operator or bystanders, and damage to the equipment or property.**

### NEVER:

- Work directly under a supported load at any time — never position any part of your body beneath the engine or stand while it is mounted, during rotation, adjustment, or while performing work. Engine stands support loads from below but are not designed as lifting or overhead support devices like hoists or jacks.
- Use this engine stand for any purpose other than its intended use: securely mounting, supporting, and rotating automotive engines or similar balanced loads within the rated 680 kg capacity. Do not use it as a hoist, jack, workbench, ladder, or for lifting people or other objects.
- Release rotational locking devices (e.g., locking pin or handwheel) quickly or abruptly — always release them slowly and carefully while maintaining firm control of the handle and constant observation of the load and stand stability to prevent sudden shifts or tipping.
- Exceed the 680 kg safe working load capacity under any circumstances.
- Modify, alter, or repair the stand using non-genuine parts or unauthorised methods — this voids the warranty and may create unsafe conditions.
- Operate the stand if it is damaged, worn, bent, cracked, or has been subjected to shock loading without professional inspection and repair.
- Allow untrained, unauthorised, or unsupervised persons to use, mount, rotate, or approach the loaded stand.
- Ignore any signs of instability, unusual noise, binding, or resistance during operation — stop immediately and correct the issue.

## PRE-OPERATIONAL SAFETY CHECKS

**WARNING – Inspect before every use. Do not use if any issue is found until repaired with genuine TQB Brands parts. Failure to check may cause failure, tipping, serious injury or death, or damage.**

- Inspect stand for cracks, bends, damage, loose/missing parts (pins, R-clips, castors, mounting head, welds).
- Check lubrication on moving parts (rotation mechanism, pivots, castors); lubricate if dry or gritty.
- Verify all bolts, nuts, and fasteners are tight and secure.
- Ensure work area is clean, well-lit, level, firm, stable, and free of hazards/tripping risks.

**Do not exceed 680 kg capacity. Remove from service if damaged or after shock loading until inspected.**

## MAINTENANCE & STORAGE

### LUBRICATION

- Castors/Wheels — Apply high-quality multi-purpose bearing grease to caster bearings, wheel axles, and swivel points. Ensure even coverage and wipe away excess to prevent attracting dirt.
- Rotation Point (Head Assembly) — Clean the Head Assembly shaft (where it rotates inside the Main Post) of old grease/debris. Apply a light coat of high-quality grease to ensure smooth, controlled rotation. Do not over-grease, as excess can collect contaminants.
- Threaded Components — Clean any exposed threads (e.g., on adjustment mechanisms or locking devices) and apply a thin layer of anti-seize lubricant or light machine oil to prevent corrosion, seizing, or binding.

### CLEANING & INSPECTION

- Cleaning — Wipe the stand with a clean, dry cloth to remove dust and debris. For oil, grease, or heavy dirt, use a mild solvent or degreaser on a cloth. Avoid harsh chemicals, abrasive pads, or high-pressure washers. Never use motor oil or petroleum-based products for cleaning — they can attract dirt and accelerate corrosion.
- Inspection — Before each use, visually check the entire stand for:
  - Cracked or damaged welds
  - Bent, deformed, or cracked metal components (legs, post, arms, mounting head)
  - Loose, missing, or worn bolts/nuts/fasteners
  - Damaged or missing pins, R-clips, castors, or locking mechanisms Replace any defective or worn parts immediately with genuine TQB Brands parts only. Do not use the stand until repairs are completed.

### STORAGE

- Store the stand in a dry, indoor location, protected from moisture, extreme temperatures, direct sunlight, and airborne contaminants (dust, sand, chemicals).
- Outdoor storage is not recommended. If unavoidable, heavily lubricate all moving parts, pivots, threads, and exposed metal surfaces with a high-quality rust-preventative grease or anti-corrosion spray. Cover the stand completely with a weatherproof tarp or cover, and inspect/re-lubricate regularly.
- Always store in the upright position (legs unfolded or folded as designed) to avoid putting pressure on the casters/wheels, which can cause flat-spotting, bearing damage, or misalignment over time.
- Before long-term storage: Clean thoroughly (per Cleaning section), lubricate all points (per Lubrication section), and perform a full inspection. Loosen or remove any tension on springs/pivots if applicable to prevent fatigue.

## OPERATION

**WARNING – Only operate the stand if all Pre-Operational Safety Checks have been completed and the stand is in good condition. Never exceed the 680 kg rated capacity. Failure to follow these steps can cause sudden tipping, loss of load control, serious injury or death, or damage to equipment/property.**

### Preparation

- Position the stand on a hard, level, stable surface capable of supporting the stand plus full load. Lock all swivel casters (if equipped with brakes) to prevent unintended movement. Ensure legs are fully unfolded and pinned securely.

### Mounting the Engine

- Consult the engine/vehicle manufacturer for the correct centre of gravity and recommended mounting points (typically on the bell housing or block).
- Align the Mounting Arms/Plate with the engine's mounting holes.
- Secure the engine firmly using high-grade, appropriately sized bolts (usually M10 or M12 – not supplied) and lock washers/nuts. Tighten to the engine manufacturer's specified torque.
- Centre the load precisely on the mounting plate/head to maintain balance.
- Confirm the engine is securely fastened and the stand remains stable before proceeding.

### Rotation

- Firmly grasp the Handle Assembly (or geared crank).
- Support/take the full weight of the engine on the handle before removing the Lock Pin (to prevent sudden drop or shift).
- Slowly and deliberately remove the Lock Pin.
- Rotate the engine gradually to the desired angle, maintaining constant control and observing for any instability (e.g., caster movement, wobble).
- Stand behind the crank/handle end during rotation.


### Locking After Rotation

- Once at the desired position, align the holes in the Head Assembly with those in the Main Post.
- Fully re-insert the Lock Pin and ensure it is securely engaged (e.g., fully seated and clipped if applicable).
- Double-check that the load is stable and locked before working on or around the engine.

 **Always hold handle firmly before removing lock pin – off-centre load may cause rapid rotation and injury.**

 **Ensure legs are fully down and secured with pins/R-clips before applying any load.**

 **If instability occurs (wobble, caster shift), STOP IMMEDIATELY!**

 **DO NOT overload – exceeding 680 kg can cause stand failure, tipping, serious injury or death.**

## MOUNTING AN ENGINE

**WARNING – Incorrect mounting can cause the engine to shift, fall, or unbalance the stand, resulting in serious injury or death, crushing hazards, or damage. Use a qualified hoist or lifting device rated for the engine weight. Never exceed 680 kg total load. Always follow vehicle/engine manufacturer guidelines for mounting points and torque.**

### Preparation

- Lock the mounting plate/head rotation mechanism with the lock pin before applying any load.
- Ensure the stand is on a hard, level surface with legs fully unfolded, pinned, and casters locked.

### Mounting Procedure

- Only use high-grade mounting bolts (Grade 8.8 or stronger, or equivalent to OEM specifications) of the correct size and length. Bolts are not supplied—source them separately.
- Using a rated engine hoist or crane, carefully suspend the engine level and aligned with the mounting plate.
- With the mounting arms loosely attached to the mounting plate (but not fully tightened or removed), bolt the arms securely to the engine's rear bell housing or approved mounting points using appropriate high-grade bolts and lock washers/nuts.
- Position the engine so it is perfectly centred and straight on the mounting plate (align centre of gravity as closely as possible to the rotational axis).
- Tighten the mounting arms to the engine first (to manufacturer torque specs if known), then tighten the mounting arms to the mounting plate securely.
- Double-check all bolts are tight, connections secure, and the engine is balanced with no side-to-side lean.
- Slowly and carefully lower the hoist to transfer the full weight to the stand. Confirm stability before removing the hoist sling.

### Removing an Engine from the Stand

- Attach a rated hoist and sling securely to the engine using approved lifting points.
- Raise the hoist slowly until it fully supports the engine weight and takes all load off the stand.
- Remove the mounting bolts/arms, freeing the engine from the stand.
- Lower the engine safely with the hoist.

### Important Reminders

- Never work under a suspended or partially supported load.
- If any instability, wobble, or unusual resistance occurs during mounting or load transfer, **STOP IMMEDIATELY**, raise the hoist to re-support the load, and readjust.
- Centre-of-gravity alignment is critical—off-centre loads increase tipping risk during rotation (see Rotational Safety).

## ASSEMBLY

### ASSEMBLY SAFETY

- Get a helper to assist during assembly.
- Assemble in a large, uncluttered area near the intended work location.
- Keep all fixings loose until assembly is fully complete, then tighten securely in sequence.
- Protect component finishes from scratches and damage—cover the assembly area with cardboard, carpet, or blankets before starting.

### ASSEMBLY PROCEDURE

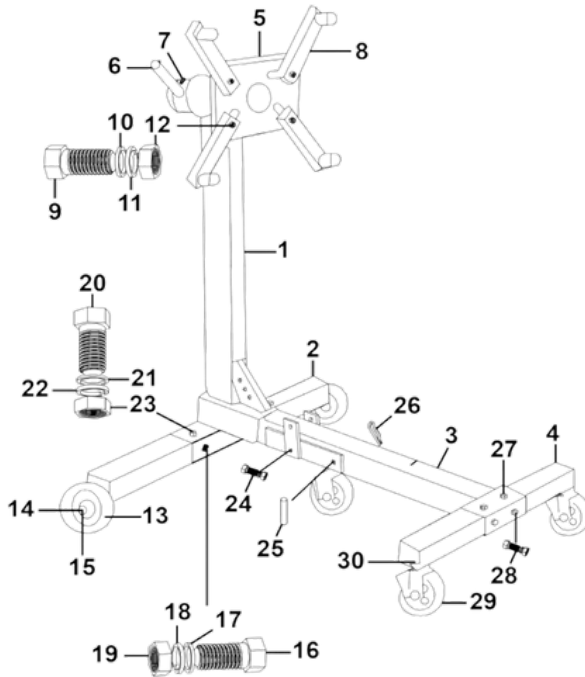
- **Main Post to Side Leg:** Assemble the Main Post to the Side Leg using hex head Bolts M12 x 110mm, Flat Washer M12, Spring Washer M12, and Steel Nut M12.
- **Front Leg:** Assemble the Front Leg to the Side Leg Castor using two Bolt Assemblies M12 x 100 and Bolt Assemblies M12 x 75.
- **Fixed Wheels:** Assemble the Fixed Wheel and Wheel Bushing to the Side Leg (Fixed) using Hex Head Set Screw M8 x 15.
- **Middle Castor:** Mount the middle castor to the Main Post using Bolt Assembly M16 x 100 and Leg Pin 12 x 90.
- **Locking Castor:** Assemble the locking Caster wheel to the Side Leg.
- **Front Leg Connection:** Assemble the Front Leg and Side Leg Castor to the Main Post using Bolt Assembly M16 x 100.
- **Head Mounting Plate:** Insert the Head Mounting Plate into the housing at the top of the Main Post.
- **Handle:** Attach the Side Handle and Locking Pin to the Main Post.
- **Mounting Arms:** Assemble the Mounting Arms to the Head Mounting Plate using Hex Head Bolt M14 x 65, Flat Washer M14, Spring Washer M14, and Steel Nut M14.
- **Final Check:** Tighten all fasteners and place end caps into the leg ends.

### PARTS LIST & DIAGRAM

#### Key Components

- **Main Post:** The central vertical support structure.
- **Side Legs:** Provide stability and house the rear fixed wheels.
- **Front Leg:** Foldable leg housing the front locking castor.
- **Head Mounting Plate:** Swiveling head where the engine is mounted.
- **Mounting Arms:** Adjustable arms (x4) that bolt to the engine bell housing.
- **Side Handle:** Used to rotate the head mounting plate.
- **Locking Pin:** Secures the head mounting plate in position.
- **Castors/Wheels:** 2 x Fixed Wheels (Rear), 1 x Middle Castor, 1 x Locking Castor (Front).

# PARTS LIST & DIAGRAM



Item	Description	Qty
1	Main Post	1
2	Side Leg, Fixed	1
3	Front Leg	1
4	Side Leg, Castor	1
5	Head Mounting Plate	1
6	Side Handle	1
7	Locking Pin	1
8	Mounting Arm	4
9	Hex Head Bolt M14 x 65mm	4
10	Flat Washer M14 Zinc	4
11	Spring Washer M14 Zinc	4
12	Steel Nut M14 Zinc	4
13	Fixed Wheel	2
14	Wheel Bushing	2
15	Hex Head Set Screw M8 X 15 Zinc	2

Item	Description	Qty
16	Hex Head Bolt M12 x 75mm	2
17	Flat Washer M12 Zinc	2
18	Spring Washer M12 Zinc	2
19	Steel Nut M12 Zinc	2
20	Hex Head Bolt M12 x 110mm	2
21	Flat Washer M12 Zinc	2
22	Spring Washer M12 Zinc	2
23	Steel Nut M12 Zinc	2
24	Bolt Assembly M16 x 100	1
25	Leg Pin (12 x 90)	1
26	R-Pin	1
27	Bolt Assembly M12 x 100	2
28	Bolt Assembly M12 x 75	2
29	Castor Wheel	2
30	Hex Head Set Screw M8 X 16 Zinc	8

Refer to the exploded diagram included in the original packaging for part identification numbers.

## WARRANTY

### Tradequip Product Warranty Information

All Tradequip products undergo thorough testing and quality assurance procedures prior to dispatch to ensure they are free from defects in materials and craftsmanship. A warranty is provided for a period of twelve months from the date of purchase. This warranty shall be void if the product is leased or hired out to third parties.

#### Warranty Claim Process

Should you experience any issues with your equipment, please return the complete product to your nearest authorized warranty repair agent or contact the TQB Brands Pty Ltd Warranty team at [warranty@tqbbrands.com.au](mailto:warranty@tqbbrands.com.au).

- If an inspection determines that the fault is due to defective materials or workmanship, repairs will be conducted at no cost to you.
- This warranty does not cover normal wear and tear or damages resulting from misuse, careless handling, unsafe practices, alterations, accidents, or repairs attempted by anyone other than an authorized TQB Brands Pty Ltd repair agent.

#### Important Notes

- This warranty supersedes any other expressed or implied guarantees, and modifications to its terms are not permitted.

Your TQB Brands Pty Ltd warranty is valid only if you can provide a dated receipt or invoice as proof of purchase within the 12-month period.

Consumer Guarantee Our goods come with a guarantee that cannot be excluded under the Australian Consumer Law. You are entitled to a replacement or refund for a major failure and compensation for any other reasonably foreseeable loss or damage. You are also entitled to have the goods repaired or replaced if the goods fail to be of acceptable quality and the failure does not amount to a major failure.



**SCAN QR CODE  
FOR TOP TIPS ON  
HOW TO INCREASE  
THE LIFE OF YOUR  
PRODUCT**



TQB Brands Pty Ltd

[www.tqbbrands.com.au](http://www.tqbbrands.com.au)