

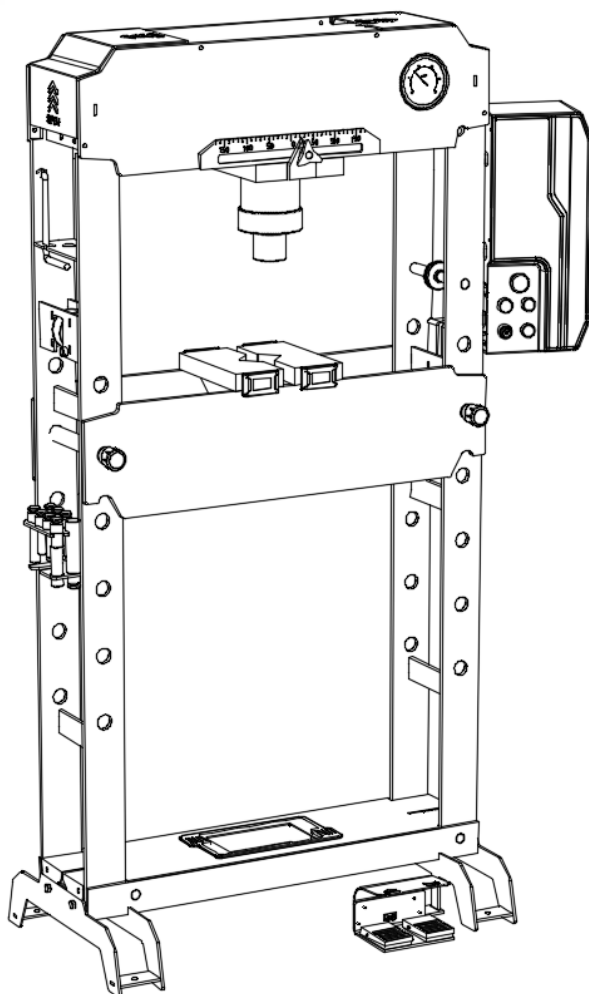
# TQ Pro

Trusted by serious professionals

## OWNERS MANUAL

ELECTRIC HYDRAULIC  
30,000KG

# WORKSHOP PRESS



**Professional  
Reputable  
Outstanding**

+ STRONG  
 + PRECISE  
 + RELIABLE  
 + WELL FINISHED

**TQ Pro** Trusted by serious professionals

LATEST APPLIED TECHNOLOGIES

### About the TQ Pro brand

TQ Pro top quality Tools and Equipment are designed and manufactured for specialist professional use in a garage and workshop environment. TQ Pro products are strong, reliable, and well finished for the expert tool user who appreciates professional design, reliability, and attention to detail. Covered by our 12month trade use warranty, our TQ Pro Tools & Equipment are made with pride to deliver the best combination of professional performance, presentation, and reliability.

Overall Width	Bed Width	Overall Height	Bed Inside	Overall Depth	Range (Min)	Range (Max)	Ram Travel	Ram Stroke	Screw Adjust	Ram Movement
1080	600	1800	148	505	25	850	220	145	75	200

## WARNING INFORMATION

### IMPORTANT: READ ALL INSTRUCTIONS BEFORE USE



#### WARNING

The instructions and warnings contained in this manual should be read and understood before using or operating this equipment. Do not allow anyone to use or operate this equipment until they have read this manual and have developed a thorough understanding of how this equipment works. Failure to observe any of the instructions contained in the manual could result in severe personal injury to the user or bystanders, or cause damage to the equipment and property. Keep this manual in a convenient and safe place for future reference.

Whilst every effort has been made to ensure accuracy of information contained in this manual, the **TQ Pro** policy of continuous improvement determines the right to make modifications without prior warning.

## CONTENT

WARNING INFORMATION.....	2
CONTENT .....	2
SAFETY INSTRUCTIONS.....	2
ASSEMBLY, OPERATION & PREVENTATIVE MAINTENANCE .....	3
PARTS LIST.....	8
PRODUCT INFORMATION TOP TIPS.....	9
WARRANTY .....	10

## SAFETY INSTRUCTIONS



#### SAFETY OPERATING INSTRUCTIONS

- This Workshop Press has been designed for general bending, toughening, axis and bearing extraction work etc.
- Never use this press for applications that should not be performed by a Workshop Press.
- Always use the appropriate tool for each specific task.
- Handle the Workshop Press correctly and ensure that all parts and components are in good condition and that no parts are missing prior to its use.
- The Workshop Press should only be used by authorised person how have read and understood the contents of this manual.
- Always position the Workshop Press against a wall. If the Workshop Press is situated in the open workshop, it is essential that a guard be placed at the rear of the unit.
- Securely mount the workshop press to the floor using the supplied hardware before use!
- The operator must wear protective clothing, gloves, safety helmet, shoes and ear protection during operating.
- To avoid accidents, always be aware of any on-going work on the machine.
- Always stay focused on the job to be done.
- Do not modify the press in any way. The Safety Valve should not be tampered with under any circumstances.
- Never exceed the rated capacity of the press and V-blocks.
- Failure to follow these instructions may cause injury, or damage the press or the workpiece.
- The manufacturer is not responsible for any damage or injury caused by improper use of the press or its components.
- Use the right product for the job. There are certain applications for which the Workshop Press was designed.
- Do not modify the Workshop Press and do not use the Workshop Press for a purpose for which it was not intended.

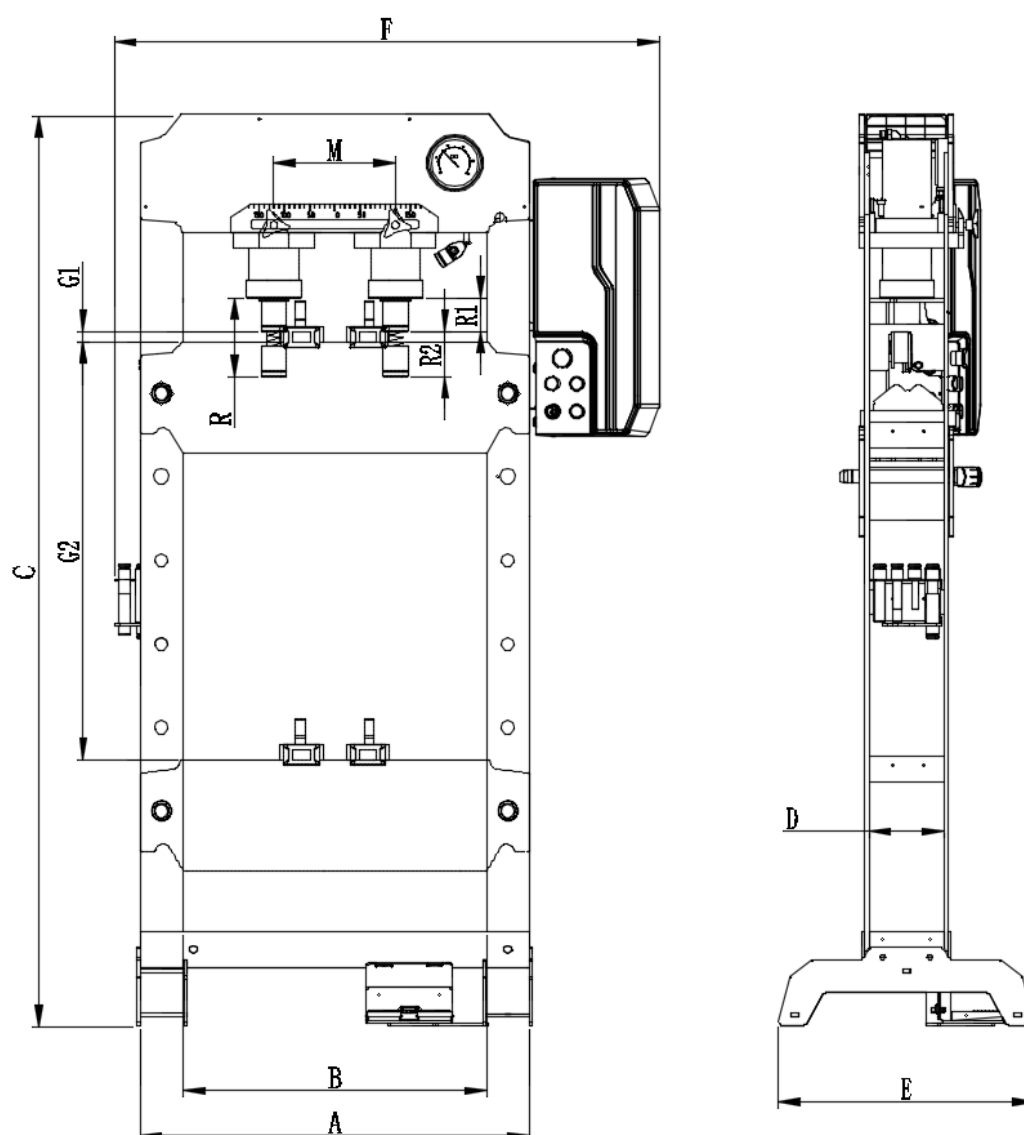
## ASSEMBLY, OPERATION & PREVENTATIVE MAINTENANCE

### 1. FEATURES

This **TQ Pro** 30,000kg Electric Hydraulic Workshop Press is perfect for straightening, stamping, bending and pressing any component that is hard to handle. Polished inner cylinder walls extend the life of the hydraulic seals to minimize abrasion and wear, while the cylinder ram and pistons are also polished and chromed, guided by high performance seals, wear rings and dust seals. Includes a dial gauge for dual metric/tons pressure readings. The **TQ Pro** Hydraulic Workshop Press frames are designed for maximum strength, reliability and durability. The strong frames and powerful high-pressure hydraulics will provide years of dependable service in many applications.

#### About TQ Pro

**TQ Pro** top quality Tools and Equipment are designed and manufactured for specialist *professional use in a garage and workshop* environment. **TQ Pro** products are strong, reliable, and well finished for the expert tool user who appreciates professional design, reliability, and attention to detail. Covered by our **12 month trade use warranty**, our **TQ Pro** Tools & Equipment are made with pride to deliver the best combination of professional performance, presentation, and reliability.

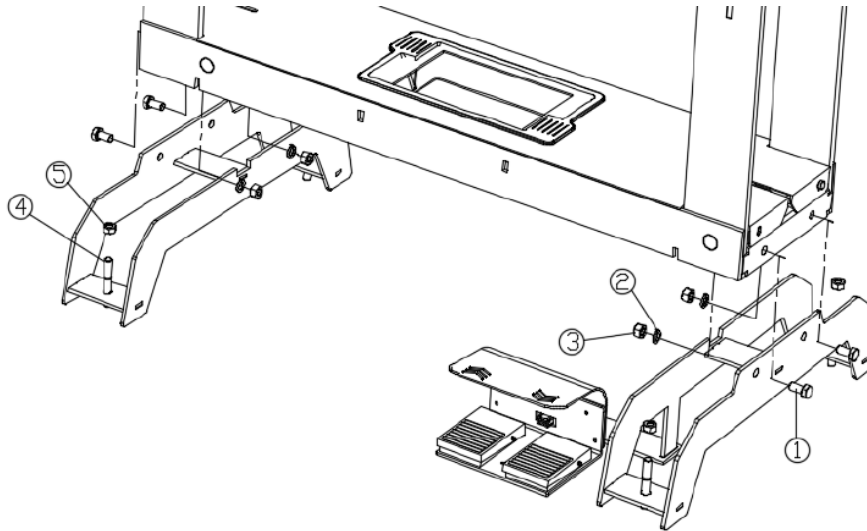


A	B	C	D	E	F	G1	G2	R	R1	R2	M
Frame Width	Bed Width	Overall Height	Bed Inside	Overall Depth	Overall Width	Range (Min)	Range (Max)	Ram Travel	Ram Stroke	Screw Adjust	Ram Movement
770	600	1800	148	505	1080	25	850	220	145	75	200

Measurements = Millimeters

## 2. ASSEMBLY

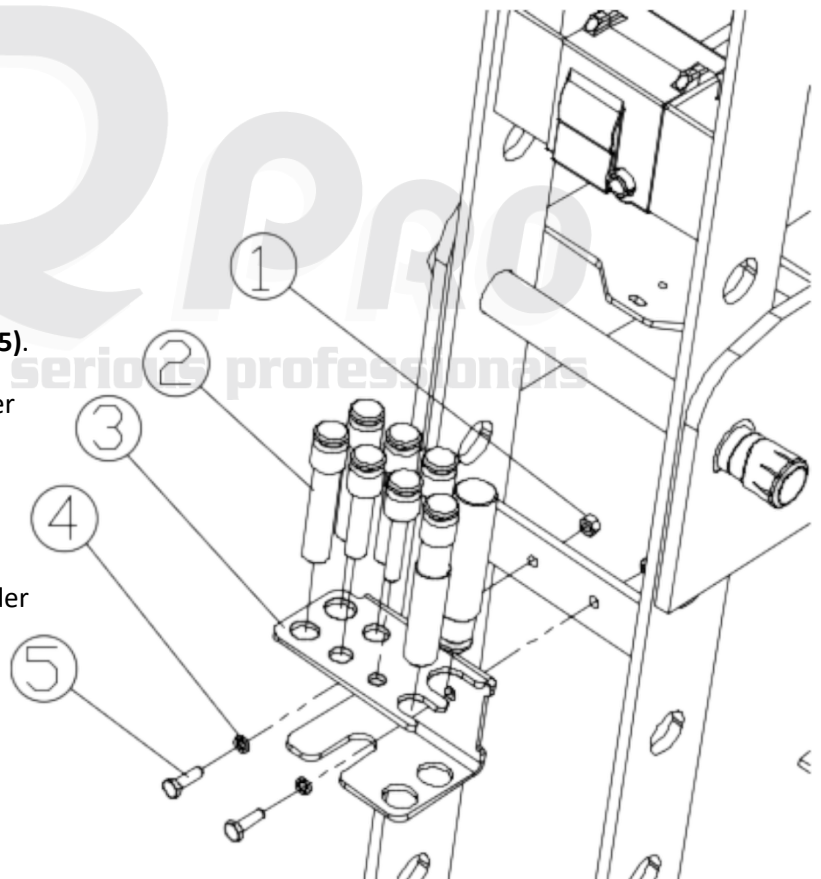
### a) Leg Assembly



1. Align each foot with the mounting holes on the base of the press frame.
2. Insert **screws (1)** with **spring washers (2)** through the mounting holes.
3. Secure with **screw nuts (3)**. Tighten firmly.
4. Position the press where it will be used. Insert **anchor bolts (4)** through the holes in the feet into the floor.
5. Secure using **anchor nuts (5)**. Tighten to ensure the press is stable.

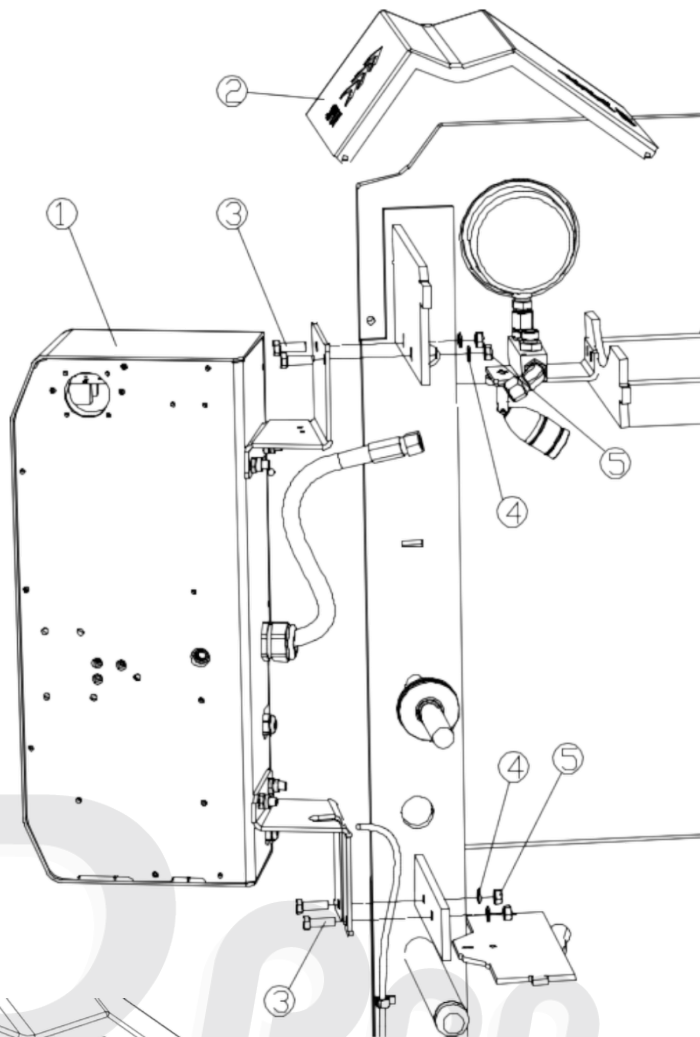
### b) Pin set holder assembly

1. Align the **pin set holder (3)** with the mounting holes on the press frame.
2. Place **spring washers (4)** onto the **screws (5)**.
3. Insert the screws through the pin set holder into the press frame.
4. Securely tighten all screws to ensure the holder is firmly attached.
5. Place the **pins (2)** into the slots on the holder for organised and easy access during operation.

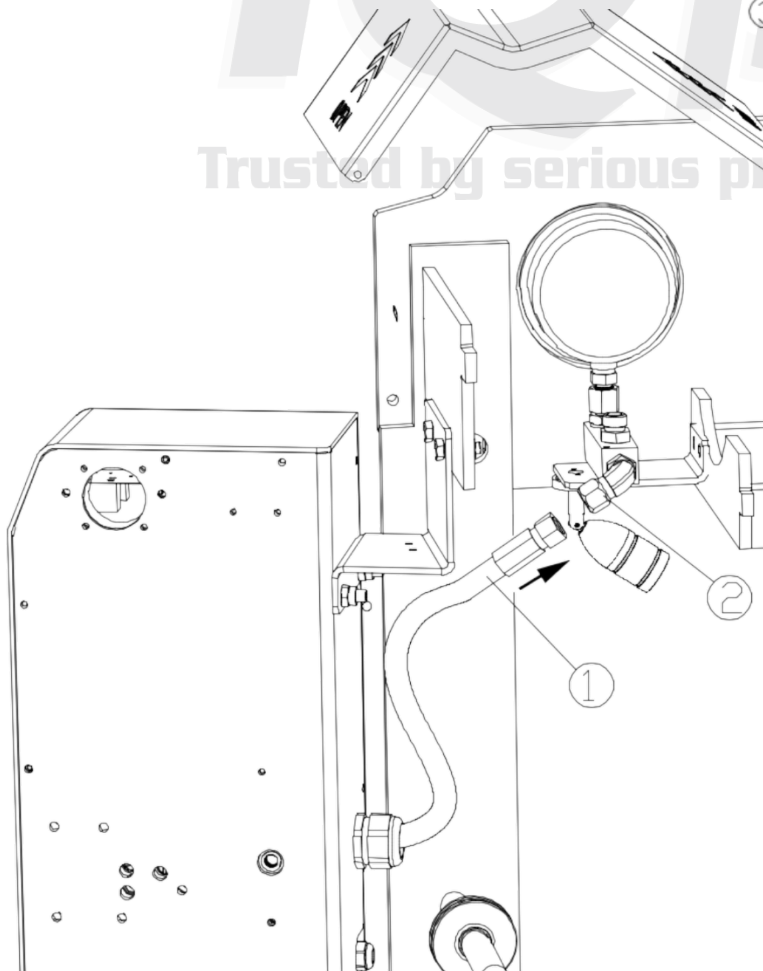


### c) Attaching the Control Panel

6. Align the **control panel (1)** with the mounting holes on the press frame.
7. Position the **dust cover (2)** as shown in the diagram.
8. Place **spring washers (4)** onto the **screws (3)** and insert them through the mounting holes.
9. Attach **screw nuts (5)** on the opposite side and tighten all fasteners securely to fix the control panel in place.



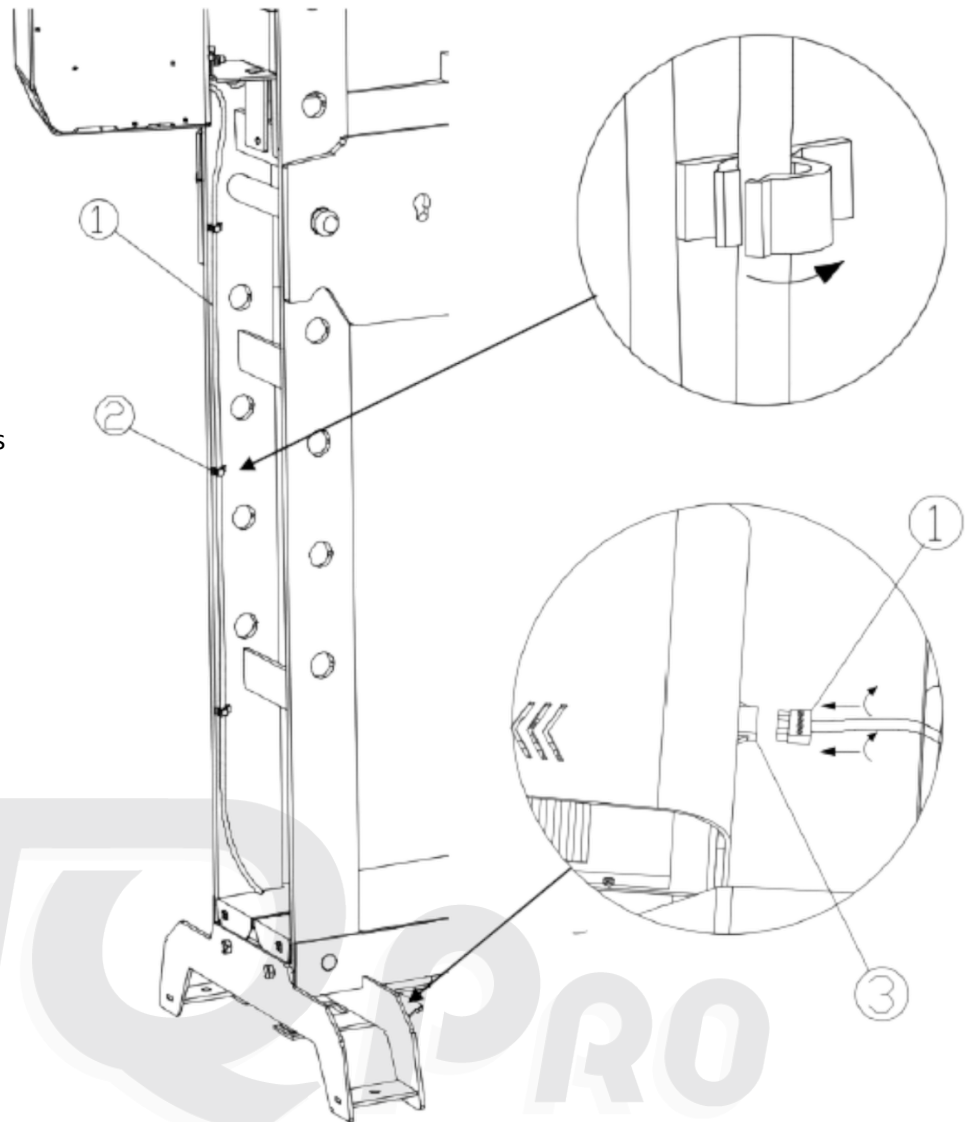
### d) Oil pipe connection



1. Connect **oil pipe (1)** to the **oil pipe elbow joint (2)**
2. Ensure connection is tight and secure

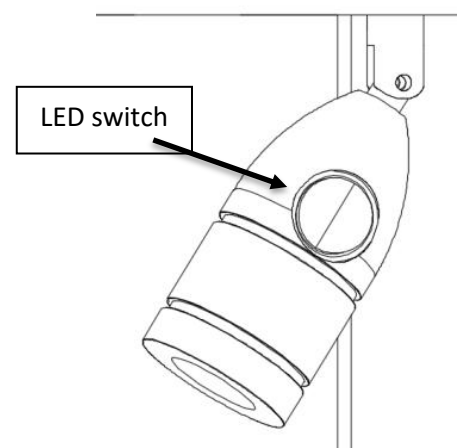
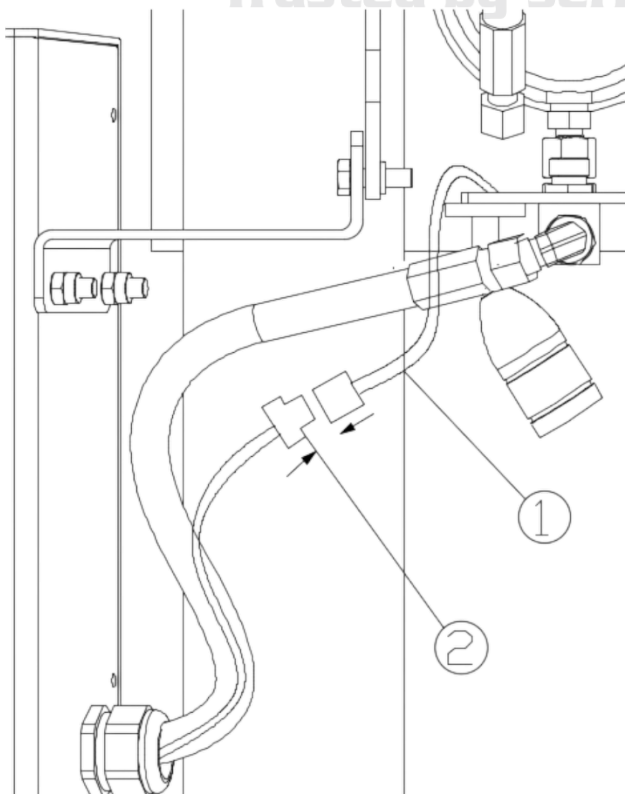
## e) Foot pedal control cable

1. Route/attach the **foot pedal control cable (1)** to the press frame using the **cable fixing clips (2)**
2. Connect the **foot pedal control cable (1)** to the **foot pedal connection plug (3)**



## f) LED light power cord

1. Connect LED light cables (1) and (2)



### 3. BEFORE USE

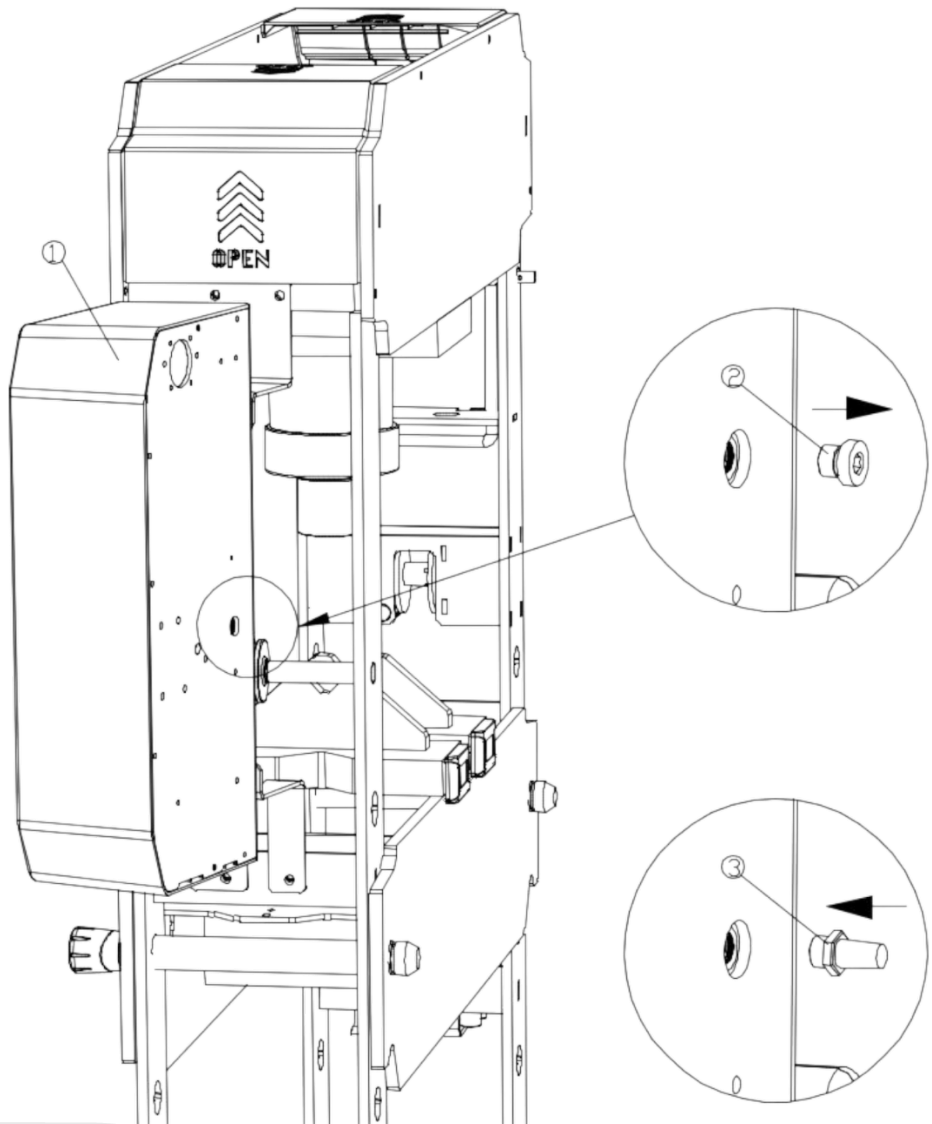
1. To reduce the risk of injury, anyone using, installing, repairing, maintaining, changing accessories on, or working near this tool must read and understand these instructions carefully. Keep this manual in a safe place for future reference.
2. Control panel voltage: AC 220V, single direction.
3. Ensure all parts are securely fixed and tightened. The press must be on a firm, level, and stable surface.
4. Ensure the bed is set to the correct height for the job and that the bed is resting evenly and completely on the bed pins.
5. Maintain sufficient space around the press during operation to ensure it is always easily accessible.
6. V-blocks must always be used in pairs, not individually.
7. Only one authorised person, who has thoroughly read and understood this manual, should operate the press at a time.



1. On the back of the **control panel (1)**
2. Remove the **oil tank plug (2)**
3. Install the **vent plug (3)**

★ The **vent plug (3)** must be installed prior to powering on!

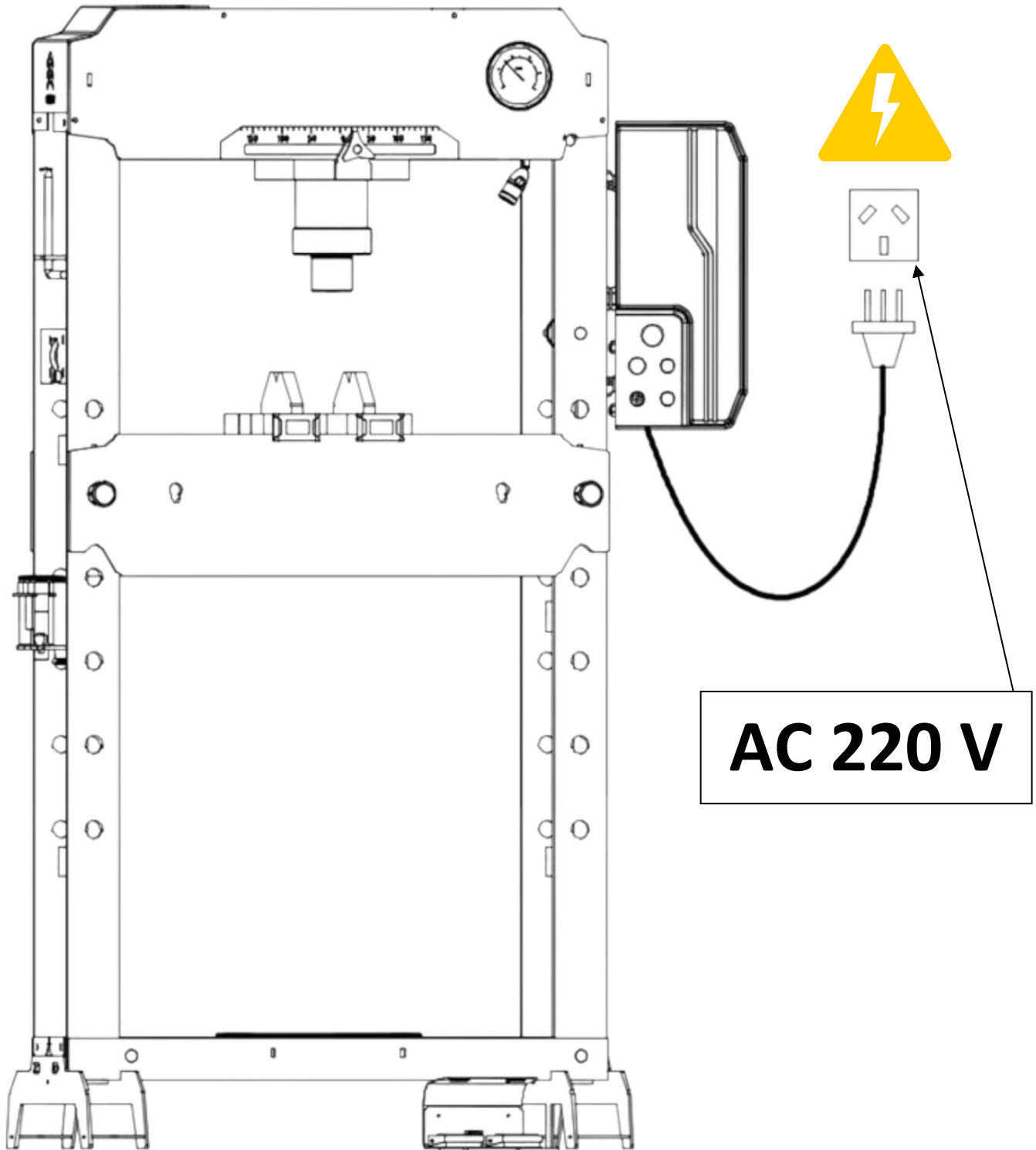
★ Keep the **oil tank plug (2)** for future maintenance



**TQ PRO**  
Trusted by serious professionals



8. Connect the control panel to a 220V power supply

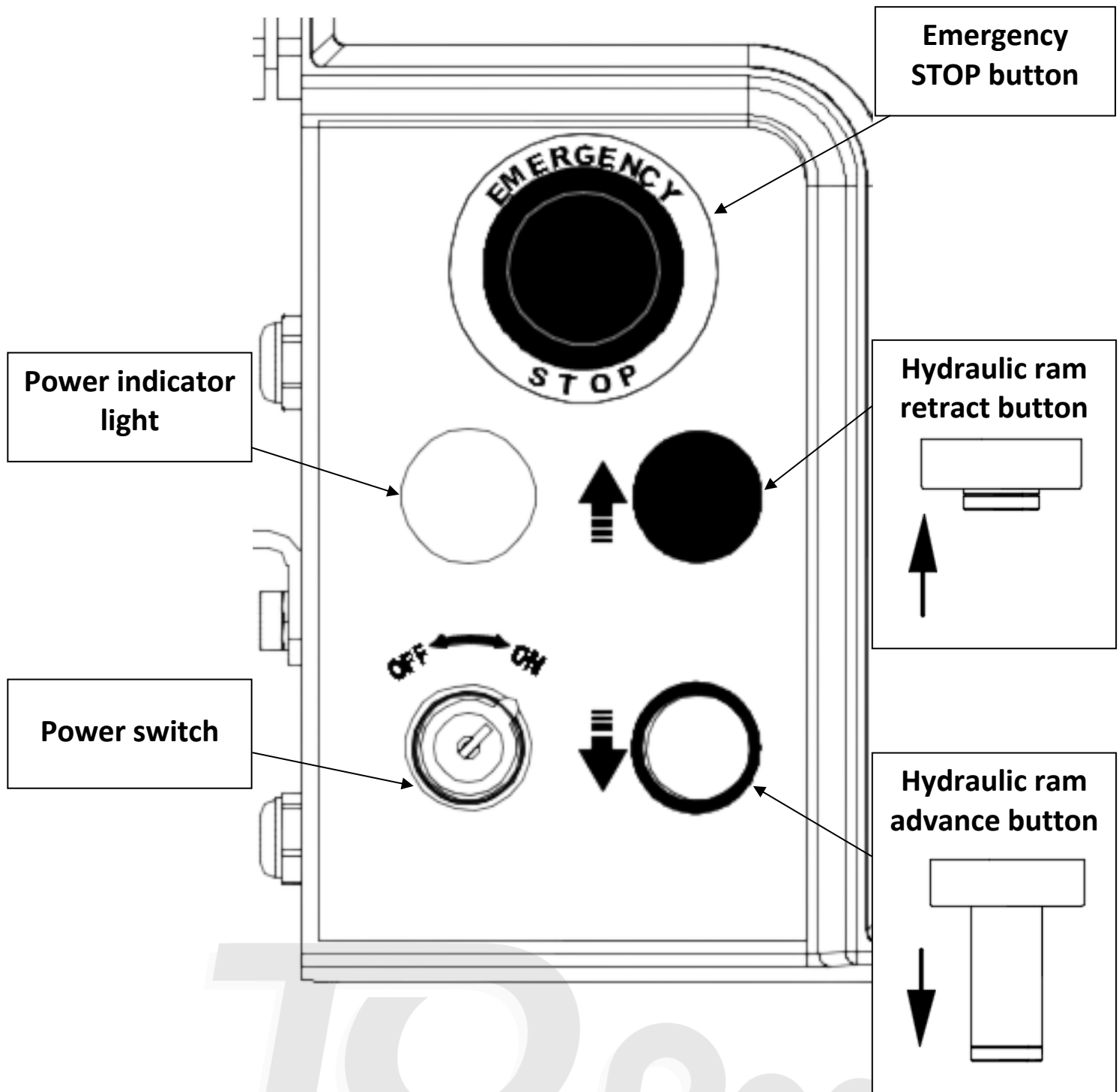


**TQ PRO**  
Trusted by serious professionals



#### 4. OPERATION

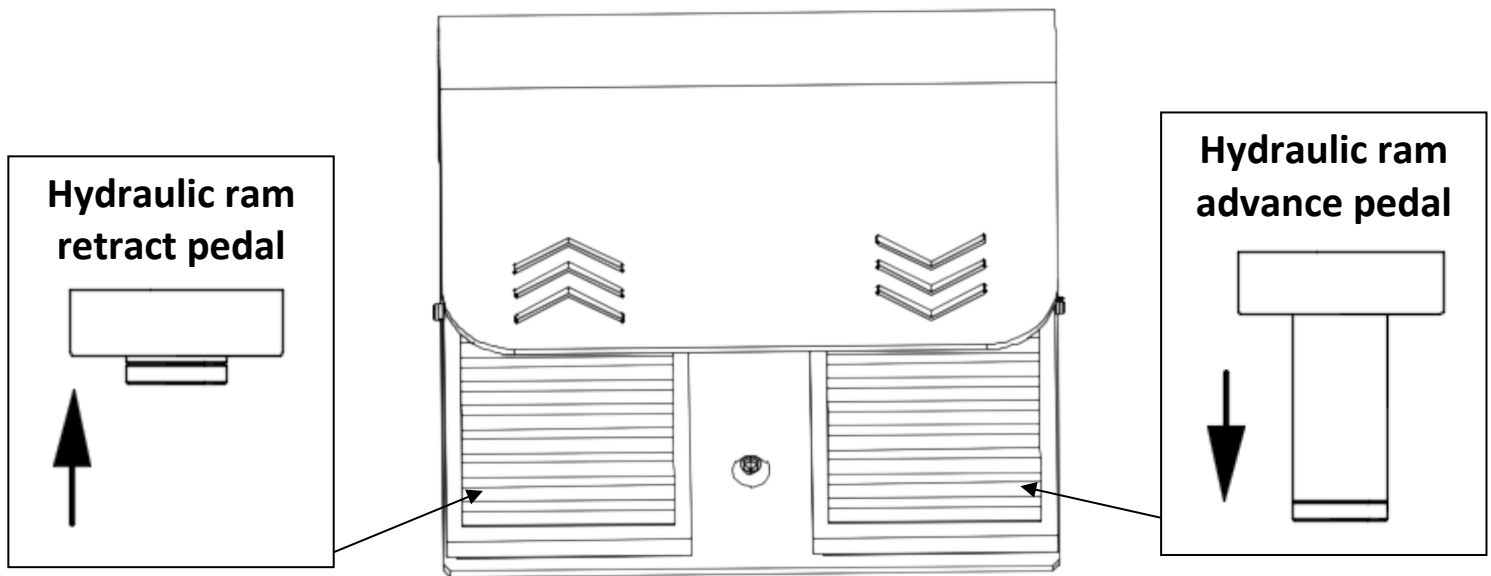
1. Set the bed to the appropriate height for the job and insert the bed support pins.
2. Wind the bed winch down 2 to 3 turns to take tension off the bed winch cable.
3. Align the workpiece and the piston so that the workpiece is properly centered.
4. Turn the power switch to the "ON" position.
5. Press the **advance button** to apply pressure to the workpiece.
6. When the work is finished, press the **retract button** to reset the hydraulic ram and remove the workpiece.



Trusted by serious professionals

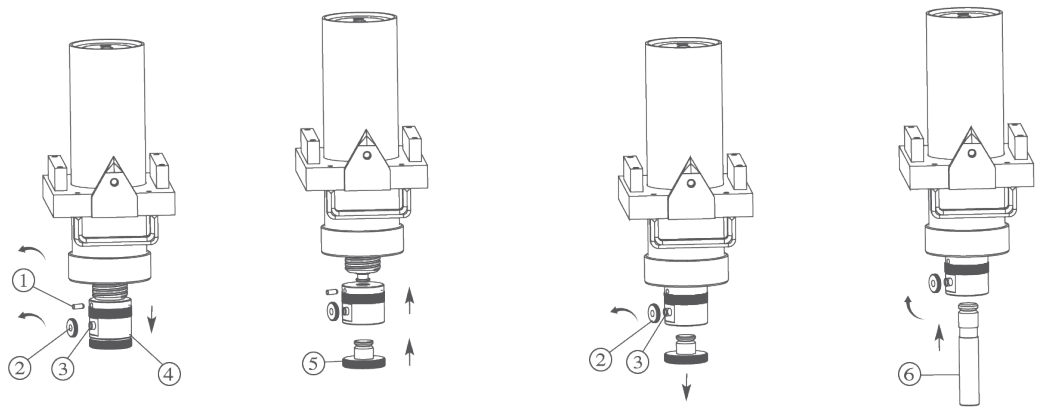
### Foot pedal instructions

1. Set the bed to the appropriate height for the job and insert the bed support pins.
2. Wind the bed winch down 2 to 3 turns to take tension off the bed winch cable.
3. Align the workpiece and the piston so that the workpiece is properly centered.
4. Turn the power switch to the "ON" position.
5. Press the **hydraulic ram advance pedal** (right pedal) to apply pressure to the workpiece.
6. When the work is finished, press the **hydraulic ram retract pedal** (left pedal) to reset the hydraulic ram and remove the workpiece.

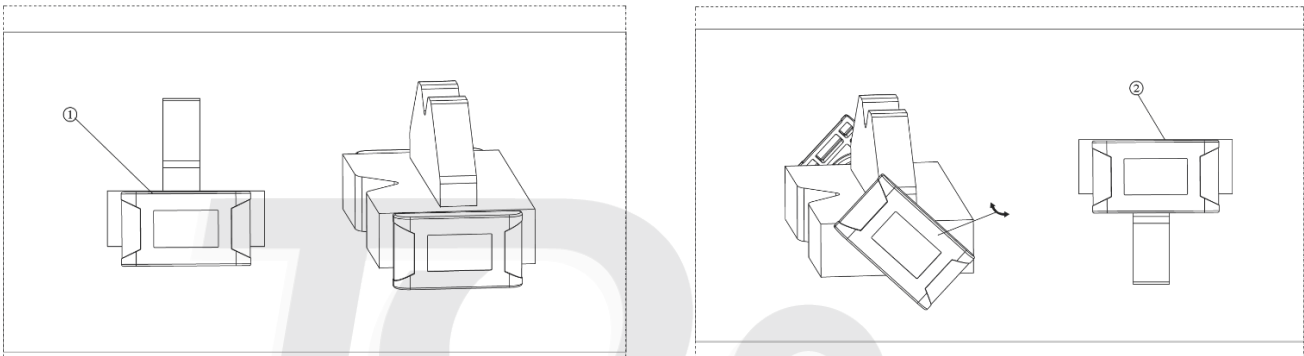


**TQ PRO**  
Trusted by serious professionals

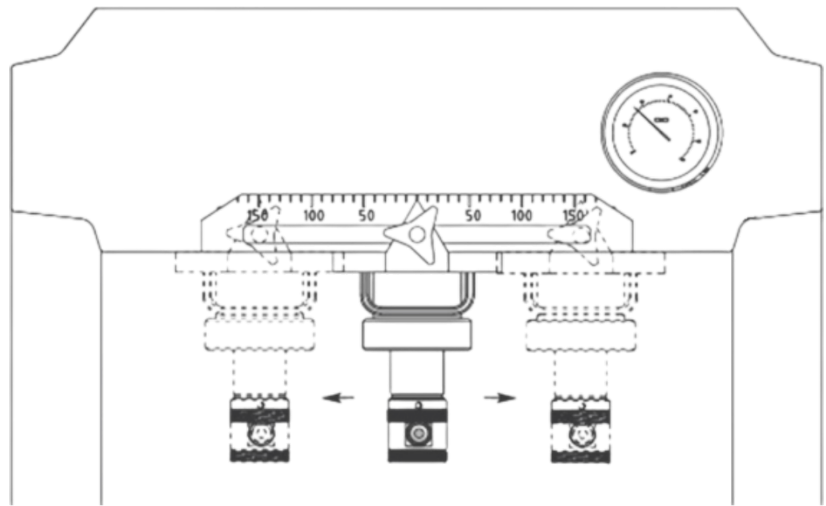
Saddle & Pin Sets Operation



V-Block Operations



Moveable Ram Operation



## **WARNING**

Do not use damaged/deformed product. If an abnormal noise or vibration occurs, **STOP** using the press immediately.

## 5. MAINTENANCE

It is recommended that a maintenance inspection be performed regularly.

Keep the Workshop Press clean and well lubricated to prevent foreign matter from entering the system.

All parts of the Workshop Press should be kept clean and protected at all times.

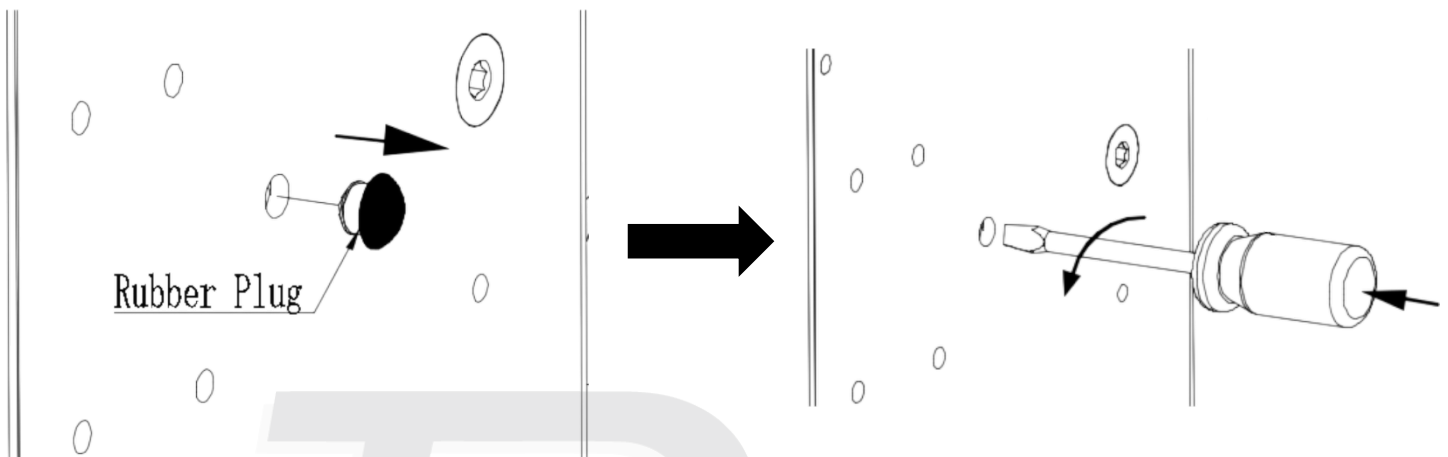
Always use original spare parts.

This hydraulic press uses ISO32 hydraulic oil.

This product requires 2.0L of hydraulic oil.

### Manual pressure relief

1. Locate and remove the rubber plug on the rear of the control panel.
2. Insert a flat head screwdriver into the opening.
3. Turn the screwdriver counterclockwise to release the pressure. Do not turn it more than 3 full turns.
4. Once the pressure is released, turn the screwdriver clockwise to close the valve again.
5. Re-insert the rubber plug into the hole.



## 6. STORAGE

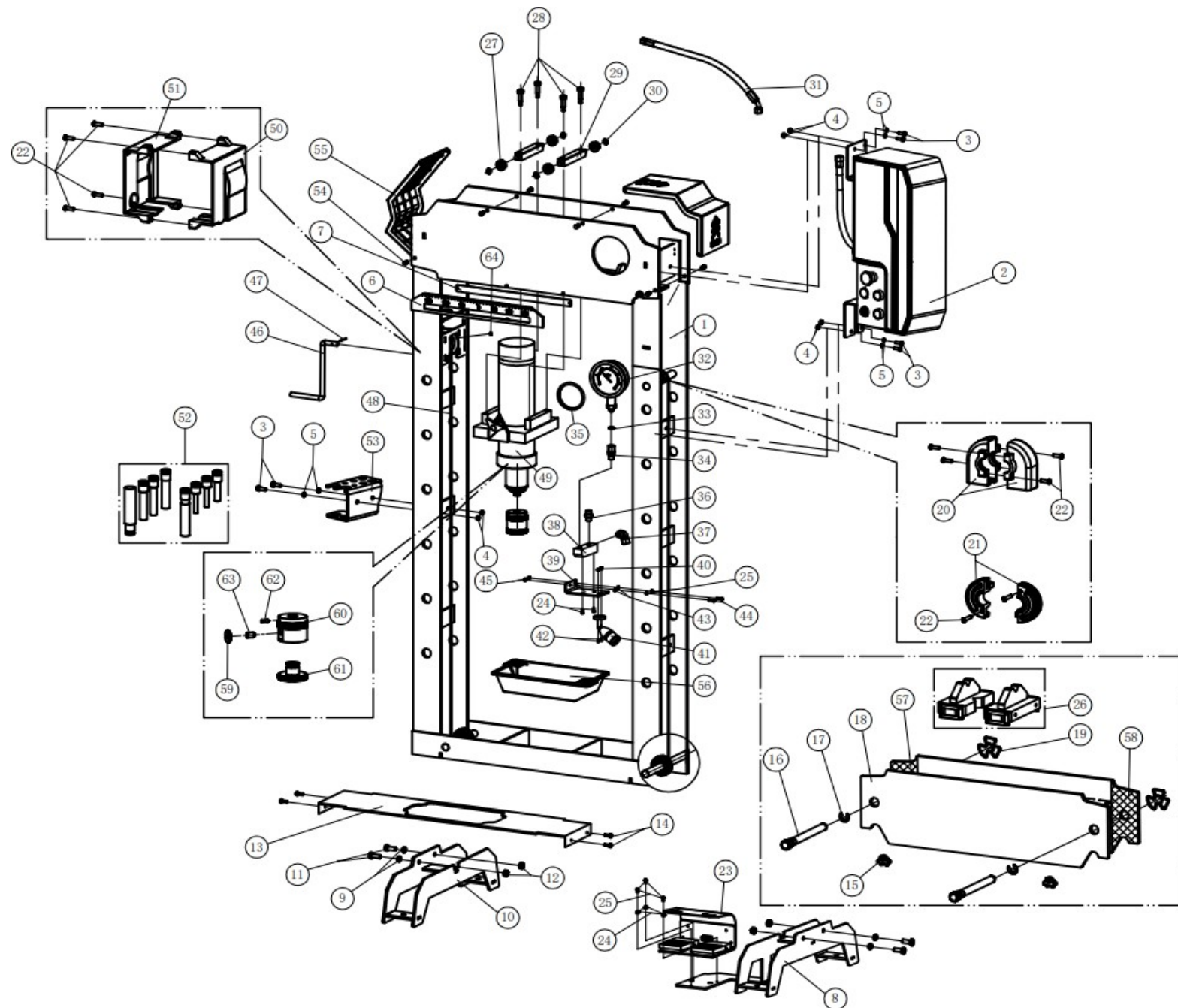
Store the Workshop Press with the pistons completely retracted, in a well-protected area away from corrosive vapours, abrasive dust or any harmful elements.

It is recommended that a maintenance inspection be performed regularly.

## 7. SERVICE & REPAIR

Any **TQ Pro** Workshop Press found damaged in any way, or found to be worn or operates abnormally should be removed from service until repaired by an authorised service agent. Owners and / or operators should be aware that repair of this product may require specialised equipment and knowledge. Only authorised parts, labels, decals shall be used on this equipment. Annual inspection of the Workshop Press is recommended and can be made by an authorised repair facility to ensure that your equipment is in optimum condition and that the equipment has the correct decals and safety labels specified by the manufacturer.

## PARTS LIST



+ **STRONG**  
 + **PRECISE**  
 + **RELIABLE**  
 + **WELL FINISHED**

**TQ<sub>PRO</sub>**  
 Trusted by serious professionals

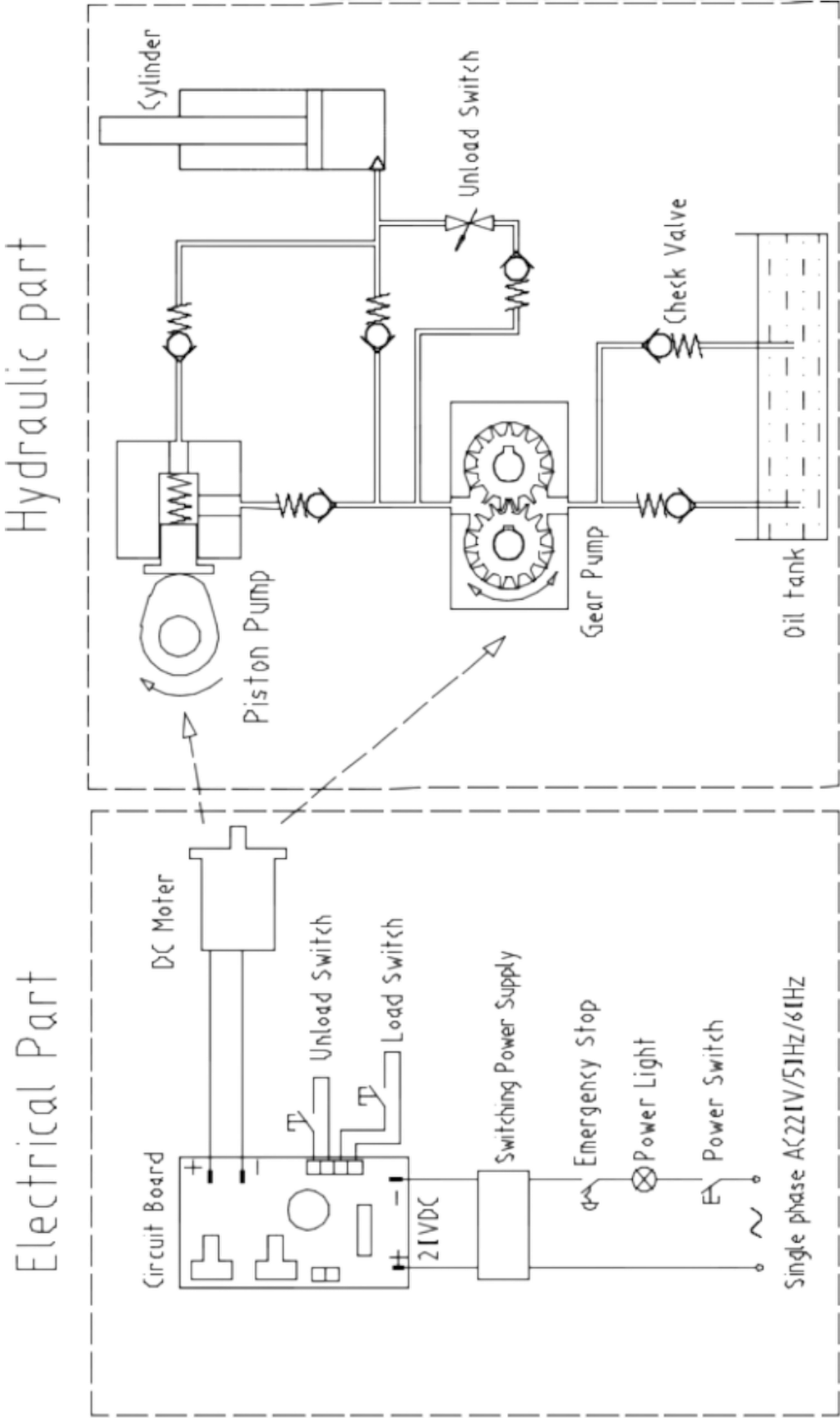
**LATEST APPLIED TECHNOLOGIES**



No.	Description	QTY
1	Frame assy	1
2	Electric control box assy	1
3	Outer hexagonal screw	6
4	Outer hexagonal screw	6
5	Spring washer	6
6	Scale	1
7	Layering	1
8	Foot base assy (Right)	1
9	Spring washer	4
10	Foot base assy (Left)	1
11	Outer hexagonal screw	4
12	Outer hexagonal screw	4
13	Plate protection cover	1
14	Outer hexagonal screw	4
15	Winch cable lock	2
16	Gear shaft	2
	Pin rubber sleeve	2
17	E-clamp	2
18	Working bench assy	1
19	Shift shaft ring	2
20	Pulley protection cover	2
21	Pulley assy(1/2)	6
22	Half round head screws	14
23	Foot pedal plate	1
	Foot switch	2
	Spring washer	8
	Inner hexagonal round head screw	8
	4-core plug-in connecting terminal	1
	4-core bracket	1
	Inner hexagonal screw	2
	Foot switch cover	1
	Inner hexagonal round head screw	4
	Spring washer	4
24	Inner hexagonal round head screw	3
25	Spring washer	5
26	V-Block assy	2
	Block baffle	2
	Rotating shaft for block baffle	2
	Machine screw	2
	Spring pin	2
	Spring pin	2
27	Bearing	4
28	Shoulder screw	4

No.	Description	QTY
29	Cylinder moving shaft	2
30	Axle clip spring	4
31	Oil pipe assy	1
32	Gauge	1
33	Locking O-ring	1
34	Gauge joint connector	1
35	Gauge protection strip	1
36	Oil pipe tie-in	1
37	Oil pipe elbow	1
38	Pressure gauge fixing block	1
39	Pressure gauge bracket	1
40	Nylon locking screw nut	2
41	LED spotlight	1
42	Inner hexagonal round head screw	2
43	Spacer	2
44	Inner hexagonal round head screw	2
45	Outer hexagonal screw	2
46	Winch handle	1
47	Cylindrical pin	1
48	Winch cable	1
49	Cylinder assy	1
50	Winch protection cover B	1
51	Winch protection cover A	1
52	Pin(2T)	1
	Pin(3T)	1
	Pin(6T)	1
	Pin(8T)	1
	Pin(10T)	1
	Pin(12T)	1
	Pin(13T)	1
	Pin(15T)	1
53	Pins set shelf	1
54	Plastic plug	8
55	Dust-proof cover	2
56	Spare parts tray	1
57	Workbench wear plate(right)	2
58	Workbench wear plate(left)	2
59	Knurl nut	1
60	Saddle	1
61	Top cover	1
62	Headless screw	1
63	Machine screw	1
64	Set screws	1

Hydraulic and Electrical Circuit Diagram





# PRODUCT INFORMATION

## How to extend the life of your Air/Hydraulic Press

### 10 Top Tips

to extend the life of  
your TQB BRANDS  
Borum and TQPro  
Air/Hydraulic Press

Includes Models:  
PROSHPR30TA,  
PROSHPR50TA,  
BSP75TA

- 1 Ensure Hydraulic oil is at correct levels.**  
Follow the BSP and PROSHPR series relevant owner's manual bleeding instructions for fluid levels, also available as a download on our webpage at [www.tqbbrands.com.au](http://www.tqbbrands.com.au)



- 2 Lubrication points.**  
Keeping your Press frame, pivots and sliding ram assemblies lubricated is essential to providing ease of operation, follow the BSP and PROSHPR series relevant owner's manual for lubrication instructions, also available as a download on our webpage at [www.tqbbrands.com.au](http://www.tqbbrands.com.au)



- 3 Always store the press ram in the fully retracted position.**  
Storage in the retracted position ensures the press ram assembly is sealed from exposure to weather fluctuations & keeps the hydraulic ram & pump seals in a relaxed condition ready to work when required.



- 4 Bed positioning.**  
To raise bed height, remove the bed pins then use the winch provided to raise the bed to the ideal height then insert the bed pins to secure the bed then loosen winch cable by winding the winch back 1 full turn to prevent the cable being stretched under load.

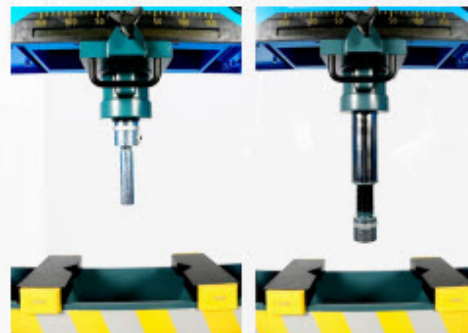


- 5 Offset ram positioning.**  
Where offset pressing jobs are required position the job on the bed at the most convenient position and slide the ram across the headstock and centre the ram load cap over the job then use the locking screw to secure the ram in position.



- 6 Job positioning and ram stroke are critical factors when performing pressing jobs.**

Single piston telescopic Press Rams have their greatest stability from the fully retracted position to 85% of total extended position. When pressing you should always use the bed to raise the job to the ram then secure with the bed pins. The wind out screw extension or solid extension inserts should always be used to close the clearance between ram and jobs load point, this greatly reduces the potential of lateral force and accidental ram overstroke.



- 7 Press block use.**

The Borum and TQPro presses come with specialty load rated press blocks that should always be used in all pressing applications where maximum ram capacity can be reached. DO NOT substitute press blocks with any other items.



- 8 TQB Brands have a selection of force rated press tools suitable for general jobbing.**

You can find them on our website at [www.tqbbrands.com.au](http://www.tqbbrands.com.au)  
Always use safety glasses and suitable PPE where required when operating your TQB Brands Press.



- 9 Read the user's Manual thoroughly and keep a copy easily accessible.**

- 10 Visit our webpage [www.tqbbrands.com.au](http://www.tqbbrands.com.au) for instructional documents & pre-start videos.**

**TQ TRADEQUIP**  
the trusted brand in equipment

**TQPro**  
Trusted by serious professionals

**BORUM**  
INDUSTRIAL WORKSHOP EQUIPMENT

## WARRANTY

**TQ Pro** products have been carefully tested and inspected before shipment and are guaranteed to be free from defective materials and workmanship for a period of 12 months from the date of purchase except where tools are hired out when the guarantee period is ninety days from the date of purchase.

Should the machine develop any fault, please return the complete tool to your nearest authorised warranty repair agent or contact TQB Brands Pty Ltd Warranty team – [warranty@tqbbrands.com.au](mailto:warranty@tqbbrands.com.au).

If upon inspection it is found that the fault occurring is due to defective materials or workmanship, repairs will be carried out free of charge. This guarantee does not apply to normal wear and tear, nor does it cover any damage caused by misuse, careless or unsafe handling, alterations, accident, or repairs attempted or made by any personnel other than the authorised TQB Brands Pty Ltd repair agent.

This guarantee applies in lieu of any other guarantee expressed or implied and variations of its terms are not authorised.

Your TQB Brands Pty Ltd guarantee is not effective unless you can produce upon request a dated receipt or invoice to verify your proof of purchase within the 12 month period.

### Consumer Guarantee

Our goods come with a guarantee that cannot be excluded under the Australian Consumer Law. You are entitled to a replacement or refund for a major failure and compensation for any other reasonably foreseeable loss or damage. You are also entitled to have the goods repaired or replaced if the goods fail to be of acceptable quality and the failure does not amount to a major failure.



All images and illustrations shown are for reference purposes only. All information, specifications and illustrations in this manual are based on the latest information available at the time of publication and are subject to change without notice. The information in this manual is periodically revised to ensure the latest information is included. Download the latest version of this manual and other related technical documentation from [www.tqbbrands.com.au](http://www.tqbbrands.com.au).