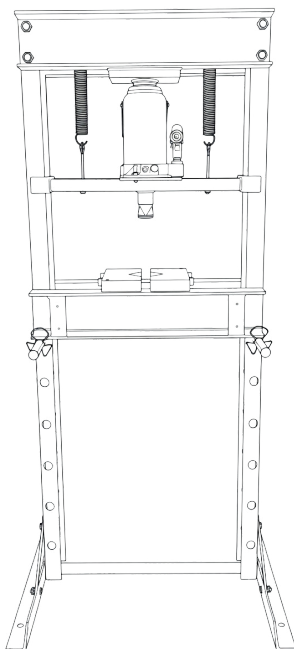


eQuipt

TOOLS & EQUIPMENT *Designed to DELIVER*



PRODUCT CODE: E13-0260
20,000KG WORKSHOP PRESS
OWNER'S MANUAL

Safe Working Capacity	Hydraulic Stroke	Working Range	Bed Width	N.W / G.W	Packed Dimensions
20,000KG	145mm	60-780mm	503mm	84KG 96KG	157 x 23 x 23 cm



TQB Brands Pty Ltd

www.tqbbrands.com.au

WARNING

IMPORTANT: READ ALL INSTRUCTIONS BEFORE USE



Read and understand this entire manual before assembling, installing, or operating this workshop press. Keep this manual readily available for future reference.

Do not allow anyone to use or operate this equipment unless they have read this manual and fully understand its safe operation.

Failure to follow these instructions and warnings may result in severe personal injury, death, property damage, or damage to the equipment.

Whilst every effort has been made to ensure accuracy of information contained in this manual, the TQB Brands Pty Ltd policy of continuous improvement determines the right to make modifications without prior warning. Visit our website at www.tqbbrands.com.au for the most up-to-date version of this manual.



PPE Required



Pinch Hazards



Hydraulic Fluids

CONTENTS

WARNING, CONTENTS	PAGE 2
SAFETY OPERATING INSTRUCTIONS	PAGE 3
ASSEMBLY, PREPERATION, OPERATION, PREVENTATIVE MAINTENANCE	PAGE 4
TROUBLESHOOTING	PAGE 9
ASSEMBLY DIAGRAM	PAGE 10
PARTS LIST	PAGE 11
WARRANTY	PAGE 12



SAFETY OPERATING INSTRUCTIONS



PRE-OPERATIONAL SAFETY CHECKS

- **Inspect the press thoroughly:** Check for bent, broken, cracked, leaking, or otherwise damaged components (including frame, bed/plates, legs, feet and power unit). Ensure all bolts, nuts, and fasteners are tight and secure.
- **Do not exceed rated capacity:** Never apply excessive force.
- **Wear appropriate PPE:** Steel and materials can shatter or fragment. Always wear safety goggles (or full-face shield), heavy-duty work gloves, steel-toe boots, and close-fitting clothing. Contain long hair and remove loose jewellery.
- **Stop immediately if failure is suspected:** If you notice signs of imminent structural failure (e.g., unusual noises, binding, tilting, or deformation), release pressure, stop use, and inspect thoroughly before continuing.
- **Use on a suitable surface:** Operate only on a stable, level, dry, non-slippery floor capable of supporting the press and load. Keep the area clean, free of unrelated materials, well-lit, and with at least 1 metre clearance around the equipment.
- **Avoid hazardous workpieces:** Do not compress springs, elastic materials, or any item that could suddenly disengage and become a projectile hazard.
- **Maintain safe positioning:** Keep hands, fingers, feet, and body clear of the bed, ram, and all pinch points at all times.
- **No modifications or misuse:** Do not alter, modify, or misuse any component of the press. Use only for its intended purpose.
- **Intended use:** This press is designed for regular professional straightening, bending, pressing, removing and installing gears, bearings, bushings, and similar tasks. Do not use for any other purpose.
- **Do not force the press:** It performs safer and more effectively when used as designed. Plan your work and select the correct tool for the job.
- **Be aware of dynamic loading:** Avoid sudden or shock loading movements, as they can briefly create excess force and cause product failure or damage.
- **Replacement parts:** For servicing or repairs, use only original eQuipt replacement parts. Non-genuine parts will void the warranty.

FAILURE TO FOLLOW THESE INSTRUCTIONS CAN RESULT IN DEATH OR SERIOUS INJURY.

ASSEMBLY, PREPERATION, OPERATION, PREVENTATIVE MAINTENANCE**Assembly**

Before assembling the Workshop Press, be sure that you have all parts described in Parts List and Assembly Diagram located towards the end of this manual.

Use the exploded drawing as your guide to assemble the press. Lay all parts and assemblies out in front of you before beginning. The following procedure is recommended:

1. Attach one foot (7) and bottom frame support (5), to left post (2) using bolts washers, lock washers, and nuts (11/14/15/16) then attach the second foot (7) and bottom frame support to right post (2).
2. Connect left post and right post (2) down by Bar Assembly (5), with the bolts.
3. Connect brace (9) to the feet (7) and posts (2).
4. Connect left post and right post (2) to Upper beam (1) with the bolts, nuts and washers (12/17/18/19).
5. On a bench lay the two Beds (4) and assemble using Beam Sleeve (10) with bolts washers and nuts (20/21/22/23).
6. Insert bed frame pins (6) into holes of the posts, then insert the joined press bed frame (4) into press frame and onto bed frame pin.
7. Attach the Power Unit (27) to the Jack Plate plate (3) using bolts and washers (29).
8. Attach Springs (24) to cross bars in the left and right side of the Upper beam (1).
9. Attach Eye Bolt (25) to springs (24) and insert them into holes provided in the Jack Plate (3) then tension using nuts provided (26) until springs have a maximum 0.5mm gap between coils.
10. Power unit can now be operated using the release screw and pump handle (28/30).

Before first use**Installation**

- Mount the Hydraulic Workshop Press securely to a flat, firm, level surface capable of supporting the full weight of the press.
- Ensure adequate clearance around the press for safe workpiece handling, operation, and emergency access.
- For stability (especially with large or unstable loads), bolt the press base firmly to the floor using appropriate anchors.

ASSEMBLY, PREPERATION, OPERATION, PREVENTATIVE MAINTENANCE**Hydraulic System Purge (Bleed Air)**

Air may enter the hydraulic system during shipping or handling, causing spongy operation or reduced performance. Purge the system before first use and repeat if issues arise later. Remove the Power Unit (27) from the Jack Plate plate (3) using bolts and washers (29).

Method #1

1. Ensure the ram is fully retracted (lowered) and no load is applied.
2. Open the release valve fully (turn counterclockwise using the handle or tool provided).
3. Pump the handle 10–20 full strokes (or as needed until smooth) to cycle fluid and expel air.
4. Close the release valve fully (turn clockwise until snug).
5. Pump the handle several times to extend the ram fully, then release pressure and retract.
6. If performance remains poor (e.g., ram does not hold or extend smoothly), repeat the process 2–3 times. Check hydraulic oil level if needed (refer to Maintenance section) and top up with high-quality hydraulic oil.

Method #2

1. Remove the Filler Bung and if required, refill with *32 Grade Hydraulic oil until the oil is lapping the bottom of the filler hole then replace the Filler Bung.
2. Start with the Pump Socket Assembly in the horizontal position.
3. Turn the release valve clockwise to the lifting position.
4. With the power unit on its base pull the pump socket upwards to the raised position.
5. Invert the power unit and push the Pump Socket Assembly back to the horizontal position.
6. Place the power unit on its base.
7. Repeat steps 4 to 6 until the Pump Lever feels firm and the lift ram is extending.
8. At this point the Pump Assembly should be bled of air. Follow steps 9 to 10 to purge the Lift Ram.
9. Ensure the power unit is on its base and make sure the Release Valve is still in raise mode, pump the lift ram to full extension.
10. Pump the Pump Socket Assembly a further ten strokes. The air trapped in the lift ram will vent to the reservoir through the Overstroke Protection Port built into the lift ram barrel positioned at the end of the lift ram stroke.
11. Turn the Release valve to the lowering position.
12. Apply force to the lift ram to the fully retracted position.

At this point both the Pump and Lift Ram should be free of air and the Power Unit is ready for operation. To attach power unit to frame, refer to Assembly instructions.

ASSEMBLY, PREPERATION, OPERATION, PREVENTATIVE MAINTENANCE cont.

DANGER – Critical Safety Reminder

This press frame is designed to withstand loads greater than the hydraulic power unit can produce. However, never exceed the rated capacity. Always:

- Secure the workpiece and any press tools (V-blocks, plates (8), etc.) centrally on the Bed (4).
- Avoid off-center loads, flexing materials, or items that could suddenly "give way" (e.g., brittle or elastic parts).
- Keep hands, body, and bystanders clear of pinch points.
- Read and fully understand all safety instructions in this manual before operating.

Operation

DANGER - Read and understand all safety instructions before operating. Keep hands, fingers, feet, and body clear of the press bed, ram, and pinch points at all times. Never stand directly in front of a loaded press. Do not exceed the rated capacity.

Follow these steps for safe and effective use:

- 1. Prepare the hydraulic unit:** Ensure the release valve is fully closed (turn clockwise until snug) so the ram can extend when pumped.
- 2. Adjust the work table:** Position the work table (bed) at the highest practical height for the job by inserting the support pins securely into the corresponding holes in the main frame columns. Confirm the table is level and fully supported on the pins.
- 3. Set up press tools and workpiece:**
 - Place the bed plates (8) (or suitable press tools) in pairs on the work table, centered directly under the ram.
 - Position the workpiece on the arbor plates or tools, aligning it centrally under the ram for even loading.
 - **WARNING:** Ensure the setup is stable—arbor plates or workpiece must not tip, slide, or fall. Use clamps if necessary to secure the configuration. Keep the area under arbor plates clear of obstructions (e.g., bolts, debris) to prevent uneven pressing or breakage.
- 4. Approach the workpiece:**
 - Pump the handle slowly to extend the ram until it is close to or just touching the workpiece.
 - Recheck alignment: The ram, workpiece, and tools must be perfectly centered. Avoid off-center loads, which can cause tilting, binding, or failure.
 - Verify the workpiece and tools are fully supported and cannot flex, bend excessively, or suddenly give way.
- 5. Apply pressure:**
 - Pump the handle steadily to apply force. Monitor the pressure gauge (if equipped) and do not exceed rated capacity.
 - Do not exceed the maximum ram stroke indicated on the label or in specifications.
 - Stop immediately if you detect unusual noises, binding, tilting, or signs of failure—release pressure and reposition.

ASSEMBLY, PREPERATION, OPERATION, PREVENTATIVE MAINTENANCE cont.

6. Complete the operation:

- When finished, slowly open the release valve (turn counterclockwise gradually, no more than 1 full turn at a time) to retract the ram.
- WARNING: The ram may retract quickly—stay clear of moving parts.
- Once fully retracted, remove the workpiece carefully.

Additional Safety Notes:

- Operate only on a stable, level surface with the press bolted down if required for the load.
- Never leave the press loaded and unattended.
- Use only for intended pressing tasks (e.g., straightening, bending, installing/removing bearings/gears). DO NOT compress springs or elastic items.

Maintenance

Daily / Before Each Use

- Check all bolts, nuts, pins, and fittings for tightness and security.
- Inspect the press frame, ram, hoses, power unit, and components for damage, cracks, bends, leaks, rust, or wear.
- Visually check hydraulic fluid for leaks around seals, fittings, and the power unit.
- Ensure the ram is fully retracted when not in use to prevent corrosion.
- Wipe down external surfaces with a clean cloth to remove dirt, debris, or oil residue.

Periodic Maintenance

- Lubricate moving parts: Apply light machine oil or grease to pivot points, hinges, table adjustment pins, ram guide, and any sliding surfaces at regular intervals (e.g., monthly for light use, weekly for heavy use). This prevents rust and ensures smooth operation.
- Keep the press clean and protected: Store in a dry, clean location away from moisture, dust, harsh chemicals, or extreme temperatures. Cover if stored outdoors.
- Hydraulic oil level and condition: Periodically check oil level in the power unit (with ram fully retracted). Oil should be level with the bottom of the fill plug hole (remove plug to check). Top up if low, but do not overfill—excess oil can cause malfunction or leaks.
- Use only approved fluid: Use good-quality hydraulic oil (e.g., ISO 32 hydraulic oil or manufacturer-recommended equivalent). DO NOT use brake fluid, motor oil, ATF, or any incompatible fluid—these can damage seals and cause failure.
- Replacement parts: Use only original eQuipt replacement parts for repairs. Non-genuine parts will void the warranty.

Additional Notes

- If the press shows signs of abnormal operation (e.g., leaks, spongy ram, failure to hold load), stop use immediately. Bleed air first (as in Before First Use section), check oil, or contact an authorized service agent.
- Annual professional inspection is recommended for heavy use to check welds, seals, and hydraulics.
- Always store with ram fully retracted.

Adding Hydraulic Oil

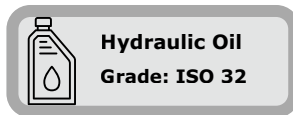
Never use brake fluid, turbine oil, transmission fluid, motor oil, or glycerin. Improper fluid will cause premature failure of the power unit and the potential for sudden or immediate loss of load.

1. Fully retract the ram (no load applied).
2. Position the power unit upright and level.
3. Remove the oil filler plug.
4. Slowly add clean hydraulic oil until it reaches just below the lower rim of the filler hole (or starts to seep out slightly—do not overfill).
5. Reinstall the filler plug securely.
6. Refer to Hydraulic System Purge (Bleed Air) for bleeding instructions.

Replacing Hydraulic Oil

For best performance and longest life, replace the complete fluid supply at least once per year.

1. Fully retract the ram (no load).
2. Remove the oil filler plug.
3. Lay the power unit on its side (or tilt safely) to drain old oil into a suitable container. Dispose responsibly per local regulations.
4. Return to upright position.
5. Refill with hydraulic oil to just below the lower rim of the filler hole (avoid overfilling; keep contaminants out).
6. Reinstall the filler plug securely.
7. Refer to Hydraulic System Purge (Bleed Air) for bleeding instructions.



Service and repair

WARNING - Do not attempt to repair or service the Hydraulic Workshop Press yourself unless you are qualified. Repairs may require specialised equipment, tools, and technical knowledge.

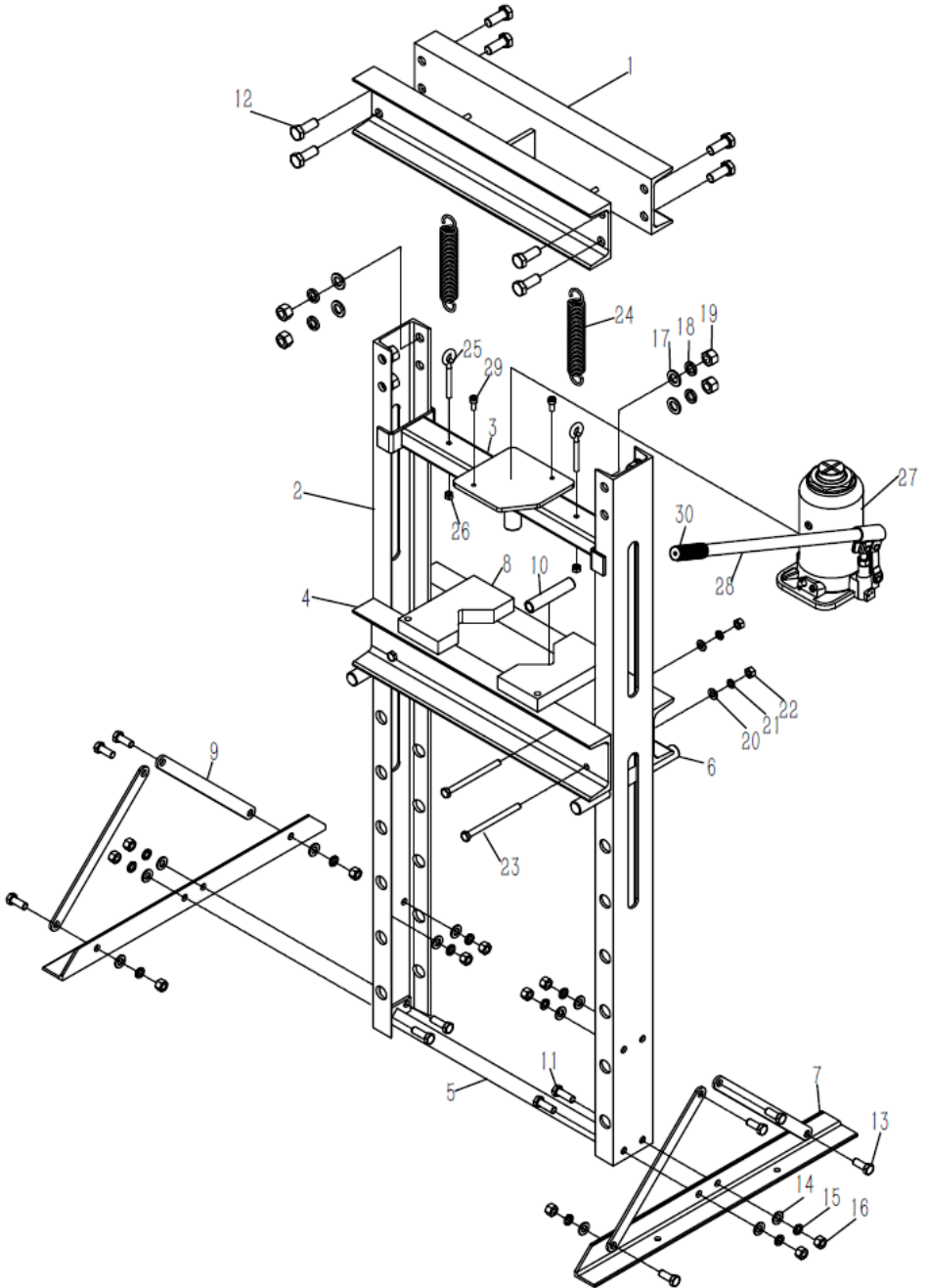
- Remove the press from service immediately if it is damaged in any way, shows signs of wear, or operates abnormally (e.g., leaks, spongy ram, unusual noises, or failure to hold load). Do not use until repaired.
- All repairs must be performed by an authorised eQuipt service agent or qualified repair facility.
- Use only genuine eQuipt (identical) replacement parts, labels, and decals. Non-authorized parts will void the warranty and may compromise safety.
- An annual inspection by an authorised repair facility is strongly recommended to verify the press is in optimal condition, free of defects, and equipped with all required manufacturer-specified safety labels and decals.

TROUBLESHOOTING

PROBLEM	POSSIBLE CAUSE	ACTION
Press will not build pressure	<ul style="list-style-type: none"> Release valve not tightly closed 	<ul style="list-style-type: none"> Ensure release valve is tightly closed.
Press will not build pressure	<ul style="list-style-type: none"> Air in hydraulic system (cavitation in pump) 	<ul style="list-style-type: none"> Bleed system (open release valve slightly, pump handle 10–20 times, close valve, extend/retract ram; repeat if needed).
Press will not build pressure	<ul style="list-style-type: none"> Overload activated (relief valve tripped) 	<ul style="list-style-type: none"> Contact qualified technician for relief valve reset/repairs.
Press will not build pressure	<ul style="list-style-type: none"> Force required exceeds ram capacity (overload) 	<ul style="list-style-type: none"> Select higher capacity press or suitable pressing tool.
Press will not hold load	<ul style="list-style-type: none"> Release valve not tightly closed (bypass) 	<ul style="list-style-type: none"> Contact qualified technician for repairs.
Press will not hold load	<ul style="list-style-type: none"> Damaged main ram seal 	<ul style="list-style-type: none"> Contact qualified technician to replace main ram seals.
Press will not hold load	<ul style="list-style-type: none"> Main check valve obstructed 	<ul style="list-style-type: none"> Contact qualified technician to replace/check valve ball and reseal.



ASSEMBLY DIAGRAM



PARTS LIST

Part #	Description	QTY
1	Upper Beam	1
2	Post	2
3	Jack Plate	1
4	Bed (2 pcs)	2
5	Bottom Frame Support	1
6	Bed Pin	2
7	Foot	2
8	Bed Plate	2
9	Brace	4
10	Beam Sleeve	4
11	Bolt	4
12	Bolt	8
13	Bolt	8
14	Washer	12
15	Spring Washer	12
16	Nut	12
17	Washer	8
18	Spring Washer	8
19	Nut	8
20	Washer	4
21	Spring Washer	4
22	Nut	4
23	Bolt	4
24	Spring	2
25	Eye Bolt	2
26	Nut	2
27	Power Unit	1
28	Handle	1
29	Bolt	2
30	Handle Sleeve	1

WARRANTY

eQuipt Product Warranty Information

All eQuipt products undergo thorough testing and quality assurance procedures prior to dispatch to ensure they are free from defects in materials and craftsmanship. A warranty is provided for a period of twelve months from the date of purchase. This warranty shall be void if the product is leased or hired out to third parties.

Warranty Claim Process

Should you experience any issues with your equipment, please return the complete product to your nearest authorized warranty repair agent or contact the TQB Brands Pty Ltd Warranty team at warranty@tqbbrands.com.au.

- If an inspection determines that the fault is due to defective materials or workmanship, repairs will be conducted at no cost to you.
- This warranty does not cover normal wear and tear or damages resulting from misuse, careless handling, unsafe practices, alterations, accidents, or repairs attempted by anyone other than an authorized TQB Brands Pty Ltd repair agent.

Important Notes

- This warranty supersedes any other expressed or implied guarantees, and modifications to its terms are not permitted.

Your TQB Brands Pty Ltd warranty is valid only if you can provide a dated receipt or invoice as proof of purchase within the 12-month period.

Consumer Guarantee Our goods come with a guarantee that cannot be excluded under the Australian Consumer Law. You are entitled to a replacement or refund for a major failure and compensation for any other reasonably foreseeable loss or damage. You are also entitled to have the goods repaired or replaced if the goods fail to be of acceptable quality and the failure does not amount to a major failure.



TQB Brands Pty Ltd

