

Superior quality since  
1984



# Owners Manual

## HEAVY DUTY WHEEL DOLLY

# B O R U M

INDUSTRIAL WORKSHOP EQUIPMENT

**INDUSTRIAL  
QUALITY**



### Specifications:

Maximum Load (kg)	1,200	Packaged Dimensions (mm)	1370 x 1040 x 250
Minimum Lift Height (mm)	0	Assembled Weight (kg)	125
Maximum Lift Height (mm)	750	Max. Wheel Diameter (mm)	2,000
Min. Wheel Diameter (mm)	1,000	Roller Length (mm)	490

### About the Borum brand

Our “heavy duty commercial” range of **Borum Industrial** equipment has been manufactured to exacting standards for the past **34 years**. We specify industrial quality components and design to ensure a long and durable working life in **commercial transport, mining, earthmoving and railway** environments. Our **Borum Industrial** range of equipment is focused on achieving superior professional standards, reliability, quality, and are covered by a **12 month trade use warranty**.

Made in China to TQB Brands Pty Ltd specifications  
Visit us at [www.tqbbrands.com.au](http://www.tqbbrands.com.au)

## WARNING INFORMATION



**IMPORTANT: READ ALL INSTRUCTIONS BEFORE USE**



### WARNING

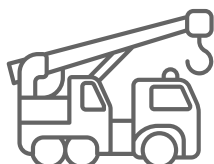
- The instructions and warnings contained in this manual should be read and understood before using or operating this equipment.
- Do not allow anyone to use or operate this equipment until they have read this manual and have developed a thorough understanding of how this equipment works.
- Failure to observe any of the instructions contained in the manual could result in severe personal injury to the user or bystanders, or cause damage to the equipment and property.
- Keep this manual in a convenient and safe place for future reference.
- The warnings, cautions and instructions discussed in this instruction manual cannot cover all possible conditions and situations that may occur.
- It must be understood by the operator that common sense and caution are factors which cannot be built into this product, but must be supplied by the operator.
- Whilst every effort has been made to ensure accuracy of information contained in this manual, the Borum policy of continuous improvement determines the right to make modifications without prior warning.

## CONTENTS

<b>Contents &amp; Intended Use</b>	<b>Page 1</b>
<b>Standard Operating Procedure</b>	<b>Page 2</b>
<b>Operation, Storage &amp; Preventative Maintenance</b>	<b>Page 3</b>
<b>Parts List &amp; Diagram</b>	<b>Page 6</b>
<b>Warranty</b>	<b>Page 9</b>

### Intended Use:

The Borum Industrial Heavy-Duty Wheel Dolly is designed for the safe removal, installation, and maneuvering of wheels and assemblies up to 1200kg on trucks, agricultural vehicles, and industrial equipment, to be used only on firm, level surfaces by trained personnel.



# STANDARD OPERATING PROCEDURE

## OPERATIONAL SAFETY INFORMATION



**WARNING!** Ensure the vehicle is securely supported on axle stands before working on it.

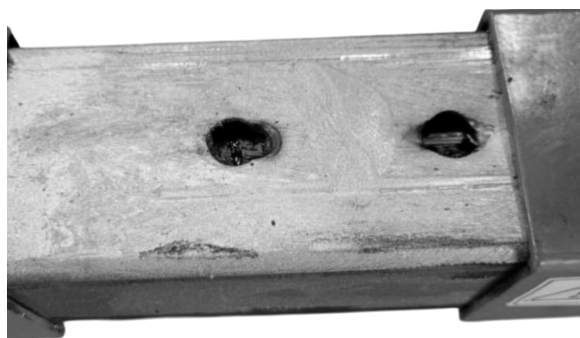
- Inspect Before Use: Verify the dolly is in sound condition and good working order.
- Keep It Clean: Maintain a clean dolly for optimal and safe performance.
- Stable Surface: Use only on a firm, level, unobstructed surface capable of supporting the dolly and wheel.
- Adequate Lighting: Ensure the work area is well-lit.
- Tidy Workspace: Keep the work area clean, tidy, and free of unrelated materials.
- Restrict Access: Keep children and unauthorized persons away from the work area.
- Safe Distance: Ensure non-essential personnel maintain a safe distance during use.
- Respect Load Limits: Do not exceed the maximum capacity of 1200kg.
- Trained Operators Only: Do not allow untrained individuals to operate the dolly.
- No Riders: Do not permit others to ride on the dolly.
- Avoid Soft Surfaces: Do not use on tarmacadam, as it may sink under load.
- Balance Only: Use the wheel support (fig. 1.4) and clamp support arm (fig. 1.5) only for balancing the wheel, not for carrying a load.
- Avoid Rough Terrain: Do not move the dolly over edges or rough surfaces when loaded, as it may tip over.
- Purpose-Built Design: Use the dolly only for its intended purpose of wheel handling.
- Stay Alert: Do not operate when tired or under the influence of alcohol, drugs, or intoxicating medication.
- Secure Locking Mechanism: Ensure the locking mechanism (fig. 1.6) is fully engaged before moving the dolly to prevent disassembly.
- Operate Safely: Control the dolly only from behind the wheel support (fig. 1.4).
- Maintain Stability: Keep proper balance and footing when moving the dolly, ensuring the floor is not slippery.
- Dress Appropriately: Wear suitable clothing to avoid snagging. Avoid loose jewelry and tie back long hair. Personal safety equipment is available from Sealey.
- Relieve Pressure: Fully extend the dolly to relieve hydraulic pressure before removing the oil reservoir cap (Section 4.1).
- Use Genuine Parts: Replace or repair damaged parts with recommended components only. Unauthorized parts may be dangerous and will void the warranty.
- Proper Maintenance: Have a qualified person lubricate and maintain the dolly. Use only approved hydraulic oil, not brake fluid, for the hydraulic unit.
- Safe Storage: When not in use, store the dolly fully lowered in a safe, dry, childproof area.



This machine has a locking pin that secures the dolly to relieve hydraulic pressure.



Do not operate the hydraulic pump when the locking pin is engaged, as this will cause damage to the machine and elongate the safety locking holes.





# OPERATION, STORAGE & PREVENTITIVE MAINTENANCE

## FEATURES

The Borum Industrial Heavy-Duty Wheel Dolly is designed to securely manage wheels up to 1200kg. It features eight adjustable rollers, with four on each side, that effortlessly turn deep-tread tires. A safety bar with a composite guard ensures stable movement.

An extended jacking handle and hydraulic foot pedal allow accurate control by a single operator. The dolly is equipped with four swivel wheels—two with locks for stability and two free-moving for easy handling. A locking mechanism holds the rollers in one of eight fixed positions.

This setup ensures dependable performance for agricultural and commercial wheel operations.

## BEFORE USE

Check the dolly before each use:

1. Do not operate if parts (including labels) are broken, bent, cracked, or damaged.
2. Stop using immediately if it functions abnormally; have it inspected by a service center (note that operating this equipment may require specialized training and knowledge).
3. Schedule an annual inspection by qualified personnel; replace any missing or damaged decals, warning labels, or signs with factory-authorized parts only.
4. Remove any structurally damaged dolly from service.

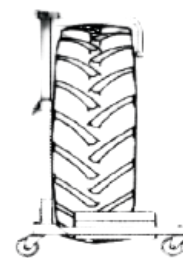


fig.2

The Clamp Support Arm (5) is used to balance the wheel vertically on the roller table

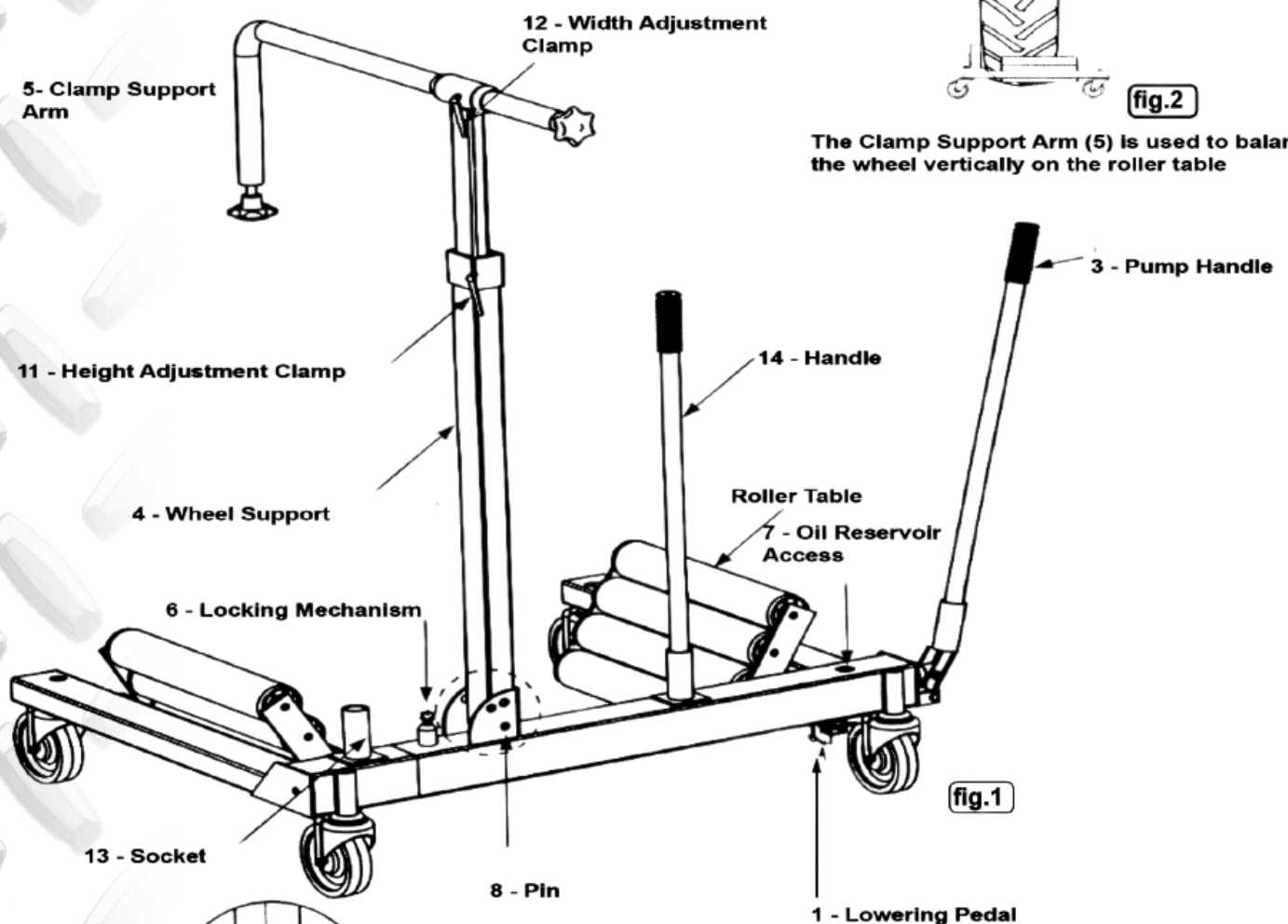


fig.1

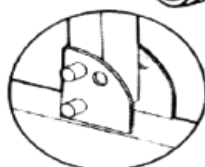


fig.3

The angle of the wheel support can be adjusted by the removal of Pin (8) to accommodate different wheel configurations.

# OPERATION, STORAGE & PREVENTITIVE MAINTENANCE cont.

## OPERATION



**WARNING!** Ensure the vehicle is securely supported on axle stands before working on it.

### LIFTING



1. Press and hold down the lowering pedal (fig. 1.1) and pump apart using the pump lever (fig. 1.3).
2. Adjust the wheel support (fig. 1.4) so that the clamp support arm (fig. 1.5) is positioned over the wheel to be handled.
3. Manoeuvre the trolley under the wheel so that the roller tables are positioned either side of the wheel and that the wheel sits up against the wheel support (fig. 1.4).
4. With the lowering pedal released, pump the roller tables inwards until the wheel and the trolley both make firm contact and cannot glide apart.
5. Lower the clamp support arm (fig. 1.5) behind the wheel (fig.2) and adjust until the wheel is vertical and can be moved approximately 5 cm from side to side to allow the wheel to be rotated on the roller table for locating the wheel studs.
6. Lock the clamp support arm in position by tightening the adjustment clamps (fig. 1.11 and fig. 1.12).
7. The angle of wheel support can be adjusted by the removal of the pin (fig. 1.8) to accommodate different wheel configurations (fig.3).
8. Lift the wheel by operating the pump lever (fig. 1.3). The locking mechanism (fig. 1.6) should be secured through the nearest location hole on the main body to prevent the trolley from coming apart.
9. Once the wheel is clear of the ground, the handle (fig. 1.14) can be moved into the additional socket (fig. 1.13) to aid manoeuvrability.

### MOVEMENT



1. Before moving the laden trolley, ensure the wheel is secured with the clamp support arm and the locking mechanism engaged, and lower the roller table to its minimum height while maintaining clearance between the tire and the ground.

### LOWERING



1. Loosen the clamp support arm (fig. 1.5) by releasing the adjustment clamps (fig. 1.11 and fig 1.12).
2. Lift and release the locking mechanism (fig. 1.6) by turning in any direction.
3. Press and hold down the lowering pedal (fig. 1.1) and operate the pump lever (fig. 1.3) to pump the trolley apart.
4. Adjust the clamp support arm (fig. 1.5) so that it does not catch on top of the wheel before manoeuvring the trolley clear of the wheel.

## STORAGE

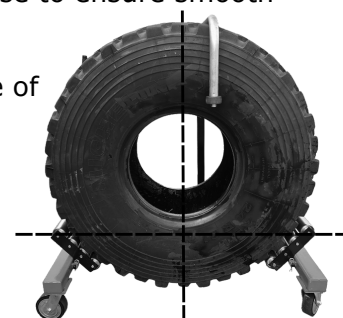
When not in use, always store this Heavy Duty Wheel Dolly with the hydraulic unit fully retracted to protect from dirt, dust and corrosion. If this Heavy Duty Wheel Dolly is not regularly cleaned and maintained correctly the components will become clogged, corroded and will not perform at its best. Application of a coating of light lubricating oil to pivot points and hinges will help to prevent rust and assure that assemblies move freely. Store in a secure dry location.

## OPERATION, STORAGE & PREVENTITIVE MAINTENANCE cont.

### MAINTENANCE



- Ensure all assembly bolts and fasteners are positioned correctly and tightened before use.
- Regularly lubricate all castors and wheels for ease of movement once loaded.
- Regularly lubricate the rollers and pivot mechanism with a light spray grease to ensure smooth operation while raising and lowering.
- All wheeled TQB Brands equipment must be used on a smooth surface free of cracked, crevices and tripping hazards that can foul the wheels during operation or relocation.
- To ensure safe movement of your wheel dolly whilst under load, always make sure the roller legs are at 90 degrees to the vehicle wheel to allow for smooth raising and reduce slippage.
- Correct storage is vital to the longevity of your dolly. Always store the dolly in a dry dust free area to minimise corrosion and all of the moving parts clean and lubricated.



### Changing Hydraulic Oil:

1. Ensure the dolly is on a firm, level surface.
2. Pump the dolly fully apart until the lifting rollers are at their maximum width.
3. Once fully extended, carefully remove the Oil Reservoir Plug.
4. Fill the reservoir with ISO 32 hydraulic oil to the appropriate level.
5. Replace the Oil Reservoir Plug securely.
6. Fully retract the ram.
7. Perform the bleed procedure.
8. Fully extend the ram and retract it to confirm there are no leaks.



**Hydraulic Oil**

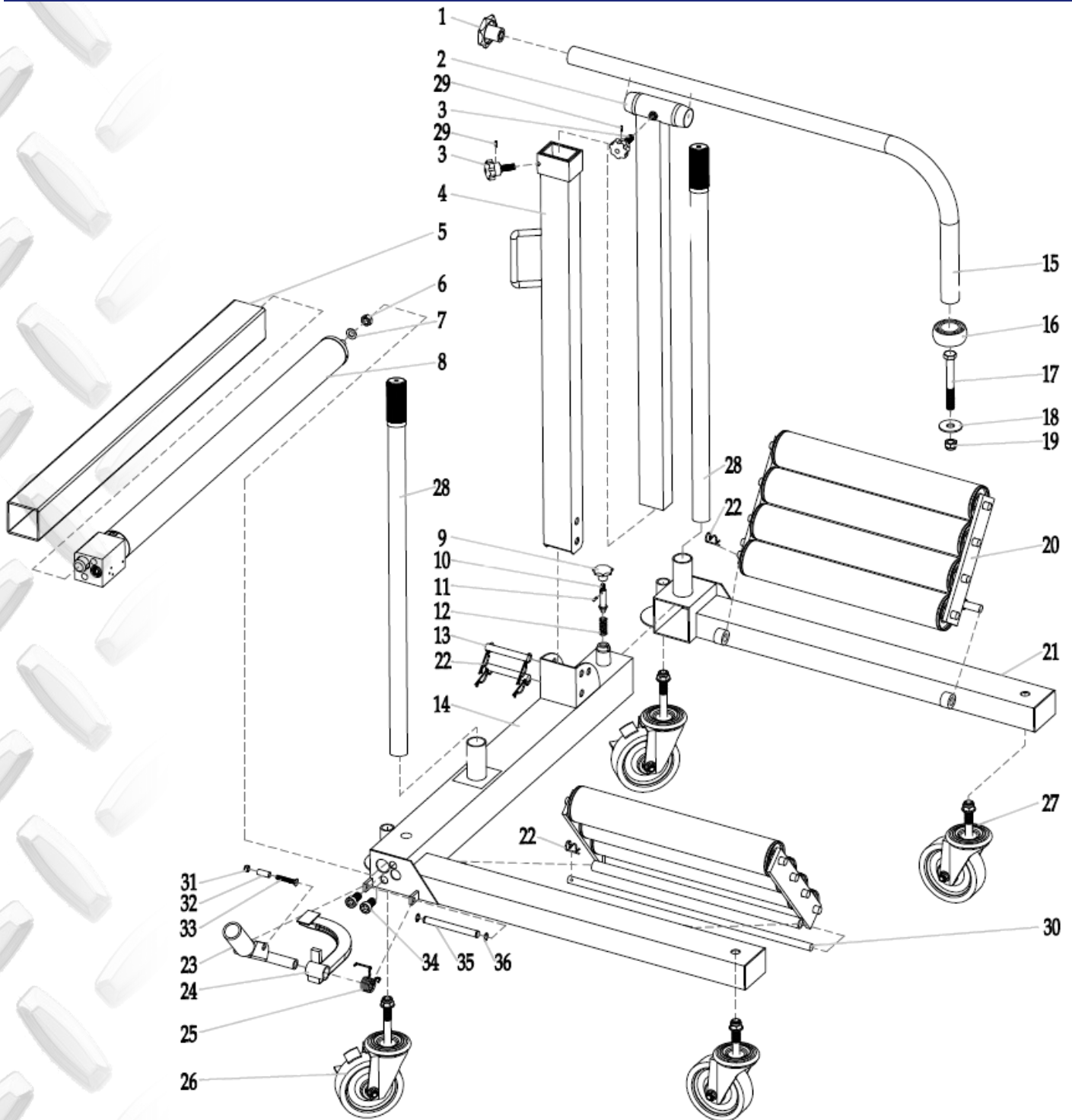
**Grade: ISO 32**

**Max. Oil Capacity: 1500ml**

### SERVICE AND REPAIR

Any Heavy Duty Wheel Dolly found damaged in any way, or found to be worn or operates abnormally should be removed from service until repaired by an authorised service agent. Owners and/or operators should be aware that repair of this product may require specialised equipment and knowledge. Only authorised parts, labels, decals shall be used on this equipment. Annual inspection of the Heavy Duty Wheel Dolly is recommended and can be made by an authorised repair facility to ensure that your equipment is in optimum condition and that the equipment has the correct decals and safety labels specified by the manufacturer.

# PARTS LIST & DIAGRAM



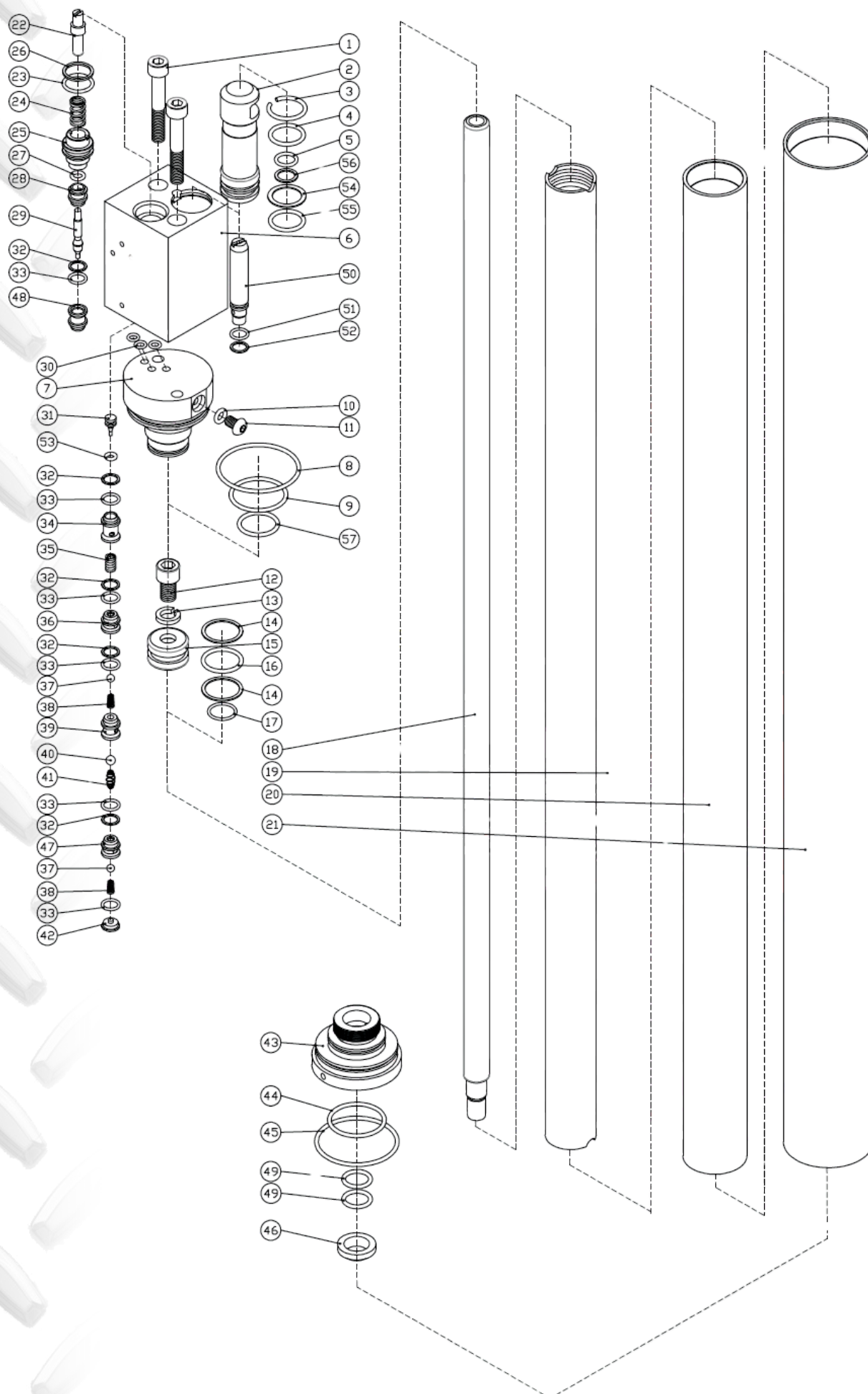
ITEM#	DESCRIPTION	QTY
1	Handle Wheel	1
2	Inner Post Assembly	1
3	Knob	2
4	Outer Post Assembly	1
5	Cover	1
6	Nut	1
7	Washer	1
8	Ram	1
9	Nut	1
10	Safety Pin	1
11	Spring Pin	1
12	Spring	1

ITEM#	DESCRIPTION	QTY
13	Pin	2
14	Inner Body & Axle Assy	1
15	Clamp Support Arm	1
16	Wheel	1
17	Screw	1
18	Washer	1
19	Nut	1
20	Roller Table	2
21	Outer Body & Axle Assy	1
22	R-Pin	6
23	Connecting Rod	1
24	Foot Pedal	1

ITEM#	DESCRIPTION	QTY
25	Torsion Spring	1
26	Swivel Caster with Brake	2
27	Swivel Caster	2
28	Handle	2
29	Spring Pin	2
30	Axis	2
31	Lock Nut M8	1
32	Bushing	1
33	Screw M8	1
34	Screw M1 6	2
35	Pin	1
36	Split Washer	2



# HYDRAULIC RAM PARTS LIST & DIAGRAM





## HYDRAULIC RAM PARTS LIST & DIAGRAM

Part#	Description	QTY
1	Hex socket screw M10x65	2
2	Pump	1
3	Roundwire snap rings for shaft	1
4	O-Ring	1
5	O-Ring	1
6	Pump Core	1
7	Lower cover	1
8	O-Ring	1
9	O-Ring	1
10	O-Ring	1
11	Hex socket screw M8x12	1
12	Hex socket screw M12x20	1
13	Spring washer	1
14	Back -up Ring	2
15	Piston head	1
16	O-Ring	1
17	O-Ring	1
18	piston rod	1
19	Cylinder	1
20	Cylinder	1
21	Reservoir	1
22	Reversing valve	1
23	O-Ring	1
24	Spring	1
25	Oil return valve cover	1
26	Back-up Ring	1
27	O-Ring	1
28	Copper sleeve	1
29	Oil return spool	1

Part#	Description	QTY
30	O-Ring	3
31	Copper sleeve cone valve	1
32	Back-up Ring	4
33	O-Ring	5
34	Copper sleeve	1
35	Spring	1
36	Copper sleeve	1
37	Steel ball Ø6mm	2
38	Conical spring	1
39	Copper sleeve	1
40	Steel ball Ø7.5mm	1
41	Expansion spring	1
42	Stopper	1
43	Upper cover	1
44	O-Ring	1
45	O-Ring	1
46	Rubber dust seal ring	1
47	Copper sleeve	1
48	Copper sleeve	1
49	O-Ring	2
50	Little Pump	1
51	O-Ring	1
52	Back-up Ring	1
53	O-Ring	1
54	Back-up Ring	1
55	O-Ring	1
56	Back-up Ring	1
57	O-Ring	1

## WARRANTY

BORUM Industrial products have been carefully tested and inspected before shipment and are guaranteed to be free from defective materials and workmanship for a period of 12 months from the date of purchase except where tools are hired out when the guarantee period is ninety days from the date of purchase. Should this piece of equipment develop any fault, please return the complete tool to your nearest authorised warranty repair agent or contact TQB Brands Pty Ltd Warranty team

[warranty@tqbbrands.com.au](mailto:warranty@tqbbrands.com.au).

If upon inspection it is found that the fault occurring is due to defective materials or workmanship, repairs will be carried out free of charge. This guarantee does not apply to normal wear and tear, nor does it cover any damage caused by misuse, careless or unsafe handling, alterations, accident, or repairs attempted or made by any personnel other than the authorised TQB Brands Pty Ltd repair agent. This guarantee applies in lieu of any other guarantee expressed or implied and variations of its terms are not authorised.

Your TQB Brands Pty Ltd guarantee is not effective unless you can produce upon request a dated receipt or invoice to verify your proof of purchase within the 12month period.

### Consumer Guarantee

Our goods come with a guarantee that cannot be excluded under the Australian Consumer Law. You are entitled to a replacement or refund for a major failure and compensation for any other reasonably foreseeable loss or damage. You are also entitled to have the goods repaired or replaced if the goods fail to be of acceptable quality and the failure does not amount to a major failure.



**TQB Brands Pty Ltd**

All images and illustrations shown are for reference purposes only. All information, specifications and illustrations in this manual are based on the latest information available at the time of publication and are subject to change without notice. The information in this manual is periodically revised to ensure the latest information is included. Download the latest version of this manual and other related technical documentation from [www.tqbbrands.com.au](http://www.tqbbrands.com.au)





TQB Brands Pty Ltd

