

Superior quality since  
1984



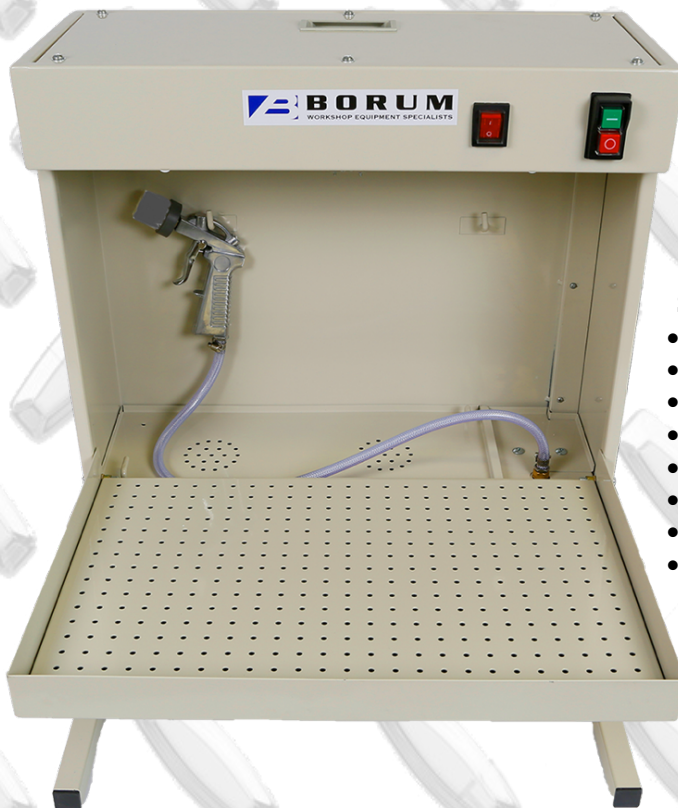
# Owners Manual

## WALL MOUNT PARTS WASHER

# BORUM

INDUSTRIAL WORKSHOP EQUIPMENT

**INDUSTRIAL  
QUALITY**



### Specifications:

- Recirculation Flow Rate: 1.9 Litres per min
- Cleaning Fluid Capacity: 14 Litres
- Power Supply: 240V/50Hz
- Dimensions: 560 x 545 x 630mm
- Door Dimensions: 525 x 350mm
- Feet Length: 260mm
- Hose Length: 900mm
- Nett Weight: 24kg

### About the Borum brand

Our **“heavy duty commercial”** range of **Borum Industrial** equipment has been manufactured to exacting standards for the past **34 years**. We specify industrial quality components and design to ensure a long and durable working life in **commercial transport, mining, earthmoving and railway** environments. Our **Borum Industrial** range of equipment is focused on achieving superior professional standards, reliability, quality, and are covered by a **12 month trade use warranty**.

## WARNING INFORMATION



### IMPORTANT: READ ALL INSTRUCTIONS BEFORE USE



#### WARNING

The instructions and warnings contained in this manual should be read and understood before using or operating this equipment. Do not allow anyone to use or operate this equipment until they have read this manual and have developed a thorough understanding of how this equipment works. Failure to observe any of the instructions contained in the manual could result in severe personal injury to the user or bystanders, or cause damage to the equipment and property. Keep this manual in a convenient and safe place for future reference.

The warnings, cautions and instructions discussed in this instruction manual cannot cover all possible conditions and situations that may occur. It must be understood by the operator that common sense and caution are factors which cannot be built into this product, but must be supplied by the operator.

Whilst every effort has been made to ensure accuracy of information contained in this manual, the Borum policy of continuous improvement determines the right to make modifications without prior warning.

**THIS MACHINE IS NOT INTENDED FOR USE WITH PETROLEUM BASED SOLVENTS**

## CONTENTS

WARNING INFORMATION .....	1
STANDARD OPERATING PROCEDURE .....	2
ASSEMBLY, OPERATION, PREVENTITIVE MAINTENANCE.....	3
TROUBLESHOOTING TIPS .....	4
PARTS LIST & DIAGRAM .....	5
WARRANTY.....	6

#### Intended Use

For automotive, truck, industrial & construction workshops. Designed to clean parts and other items using recommended water based cleaning fluid to remove grease, oil and/or dirt.

## STANDARD OPERATING PROCEDURE

### OPERATIONAL SAFETY CHECKS

- Keep work area clean and well lit. Cluttered or dark work areas invite accidents.
- ALWAYS wear suitable personal protective clothing, gloves and goggles manufactured to the latest Australian Safety Standards.
- ALWAYS ensure that adequate lighting is available. A minimum intensity of 300 lux should be provided. Ensure that lighting is placed so that you will not be working in your own shadow.
- ALWAYS regularly check for damage. If any part of the parts washer is damaged it should be carefully inspected to make sure that it can perform it's intended function correctly. If in doubt, the part should be repaired or replaced. Refer all servicing to a qualified technician.
- ALWAYS use this Parts Washer at a workbench height.
- ALWAYS ensure horizontal deviation angle is less than 2 degrees.
- Do not overfill with parts cleaning solution. Fill to just below level of parts tray
- Only use water based parts cleaning solution that is approved for use in electric parts washers.
- Drain fluid periodically. Do not leave cleaning fluid standing in tank when not in operation.
- Use only in a well ventilated areas.
- Do not smoke and/or operate this parts washer near a naked flame or machinery that may generate sparks.
- Do not operate near heat sources such as heaters, sparks, open flame, etc.
- Should fire occur in this Parts Washer, do not attempt to move this Parts Washer before closing the door to extinguish flame.
- Do not modify or jam door to keep locked in an open position.
- Use only on grounded 240V/50HZ outlet.
- ALWAYS disconnect the washer from the power supply before carrying out any maintenance.
- When servicing, use only Borum Industrial identical replacement parts. Use of any other parts will void the warranty.
- Do not modify this Parts Washer and do not use this Parts Washer for a purpose for which it was not intended.

# ASSEMBLY, OPERATION, PREVENTITIVE MAINTENANCE

## 1. FEATURES & MODELS

This Borum Industrial Wall or Bench Parts Washer has an enclosed cabinet ensuring compact efficient storage when not in use. This unit has a pump fed washing gun with a replaceable brush suitable for rapid cleaning. Included in the Mini Parts Washer is a fluorescent lighting system, ensuring excellent illumination for working with smaller parts.

## 2. ASSEMBLY

**Unpacking:** after removing the packing material, make sure the product is in perfect condition and that there are no visible damaged parts. The packaging materials (Polyethylene bags, polystyrene etc.), must be disposed of in an appropriate refuse collection container. These materials must not be left within the reach of children as they are potential sources of danger.

## 3. BEFORE USE

Conduct a thorough visual inspection checking for leaks and any abnormal conditions, such as cracked welds, leaks, and damaged, loose, or missing parts.

- Before beginning any cleaning, add the recommended parts cleaning fluid. Do not overfill. Failure to do so will result in inefficient operation and wasted cleaning fluid.

## 4. OPERATION



**Warning:** Prior to each use always conduct a visual inspection checking for leaks and any abnormal conditions, such as cracked welds, leaks, and damaged, loose, or missing parts.

### Adding Parts Cleaning Solution:

- Open cabinet cover; add cleaning solution through the mesh. Minimum 8 litres – maximum 14 litres.
- To ensure enough cleaning solution is in the tank prior to operating the fluid level should be 20mm above the suction opening/inlet.

### Fluro Light and Electrical Pump:

- Plug Mini Parts Washer into a 240V power supply.
- Turn on the On/Off electric pump switch.
- Turn on the light switch.

### Cleaning:

- Open the cabinet cover.
- Put parts into the machine resting on the filtration mesh.
- Use the brush on the cleaning gun to clean grime from parts.
- Remove parts when finished and turn off power supply On/Off switch and light switch.
- Close the cabinet cover.
- Replace cleaning solution when needed.



## 5. STORAGE

If this parts washer is not regularly cleaned and maintained correctly the components will become clogged, corroded and will not perform at its best. Always disconnect from the power supply and drain the cleaning fluid before flushing the internal surfaces, then wipe the external surfaces with a clean, dry cloth.

This prevents leftover dirt and cleaning fluid from combining with moisture and clogging the the bottom of the tank and the parts washer components.

## 6. MAINTENANCE

Replace or repair damaged parts. Use recommended parts only. Non-authorised parts may be dangerous and will invalidate the warranty.

### Disconnect 240V power supply prior to any maintenance

Inspect the general condition of the Parts Washer checking:

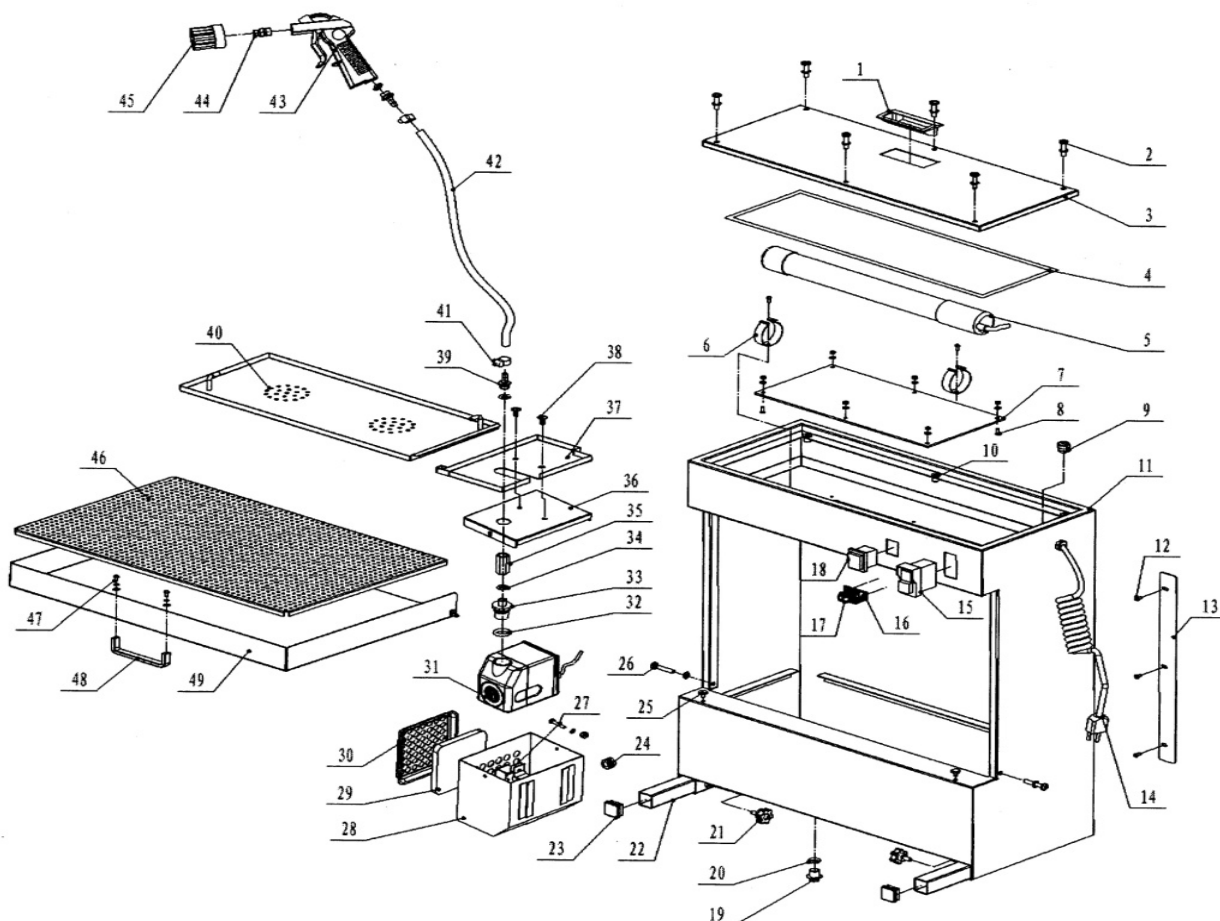
- for loose hardware
- misalignment of binding or parts, cracked, bent, or broken parts, and
- any other condition that may affect this Parts Washers safe operation
- clean the filter screen regularly.
- to change parts washer cleaning solution remove the fluid drain plug to drain used parts washer solution from tank.

## 7. SERVICE & REPAIR

Any parts washer found damaged in any way, or found to be worn or operates abnormally should be removed from service until repaired by an authorised service agent. Owners and / or operators should be aware that repair of this product may require specialised equipment and knowledge. Only authorised parts, labels, decals shall be used on this equipment. Annual inspection of the mobile sandblasting unit is recommended and can be made by an authorised repair facility to ensure that your equipment is in optimum condition and that the equipment has the correct decals and safety labels specified by the manufacturer.

## TROUBLESHOOTING TIPS

PROBLEM	POSSIBLE CAUSE	ACTION
Cleaning Fluid not coming through cleaning gun	1. Pump switch is off 2. Inadequate cleaning fluid 3. Feed Pipe is blocked	1. Turn pump switch on 2. Add more fluid into the tank 3. Check and clean the feed pipe
Light doesn't work	1. Light Switch is off 2. Light Globe is blown	1. Turn on Light Switch 2. Replace Light Globe



## PARTS LIST & DIAGRAM

Part	Description	Qty
1	Plastic knob	1
2	Screw M6*25	6
3	Top cover	1
4	Seal tape	1
5	Light	1
6	Light clipper	2
7	Organic glass	1
8	Screw M4*12	6
9	Feed through	2
10	Nut	8
11	Body	1
12	Screw M4*8	3
13	Cable fixing plate Q195	1
14	Cable	1
15	Switch KJD17	1
16	Fixing plate Q195	1
17	Clipper	1
18	Switch KCD4	1
19	Plug	1
20	O-ring	1
21	Handle bar	2
22	Support handle	2
23	Plug	2
24	Cable sleeve	1
25	Rubber screw	2

Part	Description	Qty
26	Screw M6*35	2
27	Screw M5*20	1
28	Pump housing	1
29	Filter	1
30	Filter cover	1
31	Pump AP2000	1
32	O-ring 14*2.65	1
33	Connector	1
34	O-ring x0*2/65	3
35	G1/4 connector G1/4*35	1
36	Pump cover	1
37	Right filtration plate	1
38	Screw M6*12	2
39	Connector	1
40	Left filtration plate	1
41	Clipper	2
42	Hose	1
43	Cleaning gun	1
44	Connector	1
45	Brush	1
46	Filtration plate	1
47	Screw	2
48	Handle	1
49	Front door	1

## WARRANTY

BORUM Industrial products have been carefully tested and inspected before shipment and are guaranteed to be free from defective materials and workmanship for a period of 12 months from the date of purchase except where tools are hired out when the guarantee period is ninety days from the date of purchase.

Should this piece of equipment develop any fault, please return the complete tool to your nearest authorised warranty repair agent or contact TQB Brands Pty Ltd Warranty team – [warranty@tqbbrands.com.au](mailto:warranty@tqbbrands.com.au).

If upon inspection it is found that the fault occurring is due to defective materials or workmanship, repairs will be carried out free of charge. This guarantee does not apply to normal wear and tear, nor does it cover any damage caused by misuse, careless or unsafe handling, alterations, accident, or repairs attempted or made by any personnel other than the authorised TQB Brands Pty Ltd repair agent.

This guarantee applies in lieu of any other guarantee expressed or implied and variations of its terms are not authorised.

Your TQB Brands Pty Ltd guarantee is not effective unless you can produce upon request a dated receipt or invoice to verify your proof of purchase within the 12month period.

### Consumer Guarantee

Our goods come with a guarantee that cannot be excluded under the Australian Consumer Law. You are entitled to a replacement or refund for a major failure and compensation for any other reasonably foreseeable loss or damage. You are also entitled to have the goods repaired or replaced if the goods fail to be of acceptable quality and the failure does not amount to a major failure.



All images and illustrations shown are for reference purposes only. All information, specifications and illustrations in this manual are based on the latest information available at the time of publication and are subject to change without notice. The information in this manual is periodically revised to ensure the latest information is included. Download the latest version of this manual and other related technical documentation from [www.tqbbrands.com.au](http://www.tqbbrands.com.au)