

Owners Manual

Product Code: 3060

**MADE FOR THE
TRADE**



MOBILE BLASTING CABINET



Specifications:

- Capacity: 19 Litre
- Working Pressure: 60-80psi
- Air Delivery: 400-600 Litres per minute @ 80psi (dependent on nozzle size)
- Abrasive Use: 20-70kg @ 80psi per hour (dependant on nozzle size)
- Hose Length: 3 Metres
- Tank Dimensions: 490H x 305W x 400D
- Nett Weight: 13kg
- Carton: 620 x 420 x 360mm
- Gross Weight: 15kg

About the TradeQuip brand

The 'TradeQuip' brand of workshop equipment, is designed for use in a demanding workshop environment by professional users. With proven and trusted "made for the Trade" reliability, 'TradeQuip' branded products offer the very best in performance for an affordable price. All backed by a 1year trade guarantee across 1,000+ distributors Australia wide.

**BLASTING
CABINET**



WARNING INFORMATION

IMPORTANT: READ ALL INSTRUCTIONS BEFORE USE



WARNING

The instructions and warnings contained in this manual should be read and understood before using or operating this equipment. Do not allow anyone to use or operate this equipment until they have read this manual and have developed a thorough understanding of how this equipment works. Failure to observe any of the instructions contained in the manual could result in severe personal injury to the user or bystanders, or cause damage to the equipment and property. Keep this manual in a convenient and safe place for future reference.

Whilst every effort has been made to ensure accuracy of information contained in this manual, the Tradequip policy of continuous improvement determines the right to make modifications without prior warning.

CONTENT

WARNING INFORMATION 2

CONTENT..... 2

STANDARD OPERATING PROCEDURE 3

ASSEMBLY, OPERATION & PREVENTATIVE MAINTENANCE 4

PARTS LIST SAFETY TRIGGER 8

PARTS LIST..... 9

WARRANTY 10

STANDARD OPERATING PROCEDURE

DO NOT use this machine unless you have been trained and assessed to a competent level in its safe use and operation, and have been given permission to use this



Safety glasses must be worn when operating this equipment



Long loose hair must be contained when operating this equipment



Safety footwear must be worn when operating this equipment



Close fitting/protective clothing must be worn when operating this equipment



Rings and jewellery must not be worn when operating this equipment

PRE-OPERATIONAL SAFETY CHECKS

- Any mobile sandblasting unit will produce a powerful flow of abrasive particles. To avoid personal injury and property damage, study this manual thoroughly before assembling, operating or servicing this mobile sandblasting unit.
- During operation, do not expose the hands or skin directly in the line of the blast nozzle.
- Ensure all components seal properly after assembly.
- Do not exceed the maximum operating pressure of the blasting equipment.
- Disconnect the sandblaster from the air supply before changing accessories or attempting to install, service, relocate or perform any maintenance.
- Check hoses and air lines for weak or worn condition before each use. Make sure all the connections are secure before use.
- Do not point the abrasive blaster gun at anyone or objects.
- Before operating this equipment, consider the availability and proximity of the required air supply.
- Always wear personal protective gear.
- Fire or Explosion Hazard! DO NOT USE a media blaster around combustible or flammable liquids, dusts, gases, oily rags, or other materials that can explode or burn quickly. Some abrasives create sparks when they hit metal. Abrasives similar to aluminium oxide may generate static electricity sparks which may cause fires or explosions in an unsafe environment.

INTENDED USE

Blasting work using recommended abrasive media and/or glass beads to clean and abrade a surface, typically metal, of any rust, paint or other unwanted surface materials.

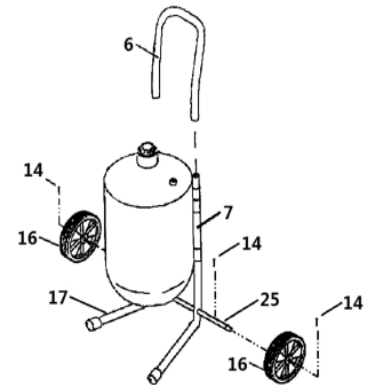
ASSEMBLY, OPERATION & PREVENTATIVE MAINTENANCE

1. FEATURES

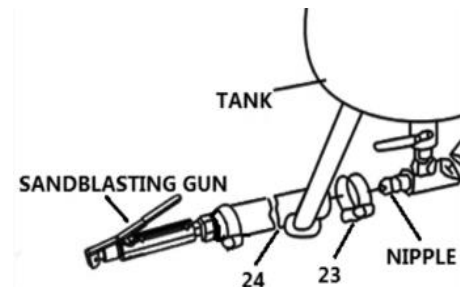
The Tradequip mobile sandblasting unit is supplied with 2.4m rubber hose, four ceramic nozzles and in-line water trap for moisture-free grit blasting. Also includes bayonet air line coupling and air flow regulator. Accepts a variety of grits up to 80microns and is suitable for stripping rust and paint from wheels, chassis, panels and other corroded/painted surfaces.

2. ASSEMBLY

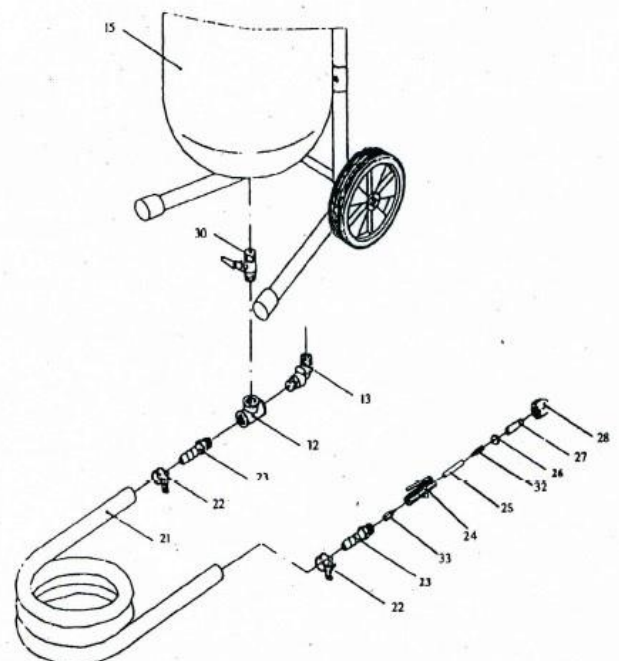
1. Attach two wheels (16) to the axle (25) and secure using two cotter pins (14).
2. Slide the handle bar (6) onto the left leg (7) and right leg (17) and secure it with two self tapping screws.



3. Loosen the hose clamps (23) and slide onto the sandblasting gun hose (24).



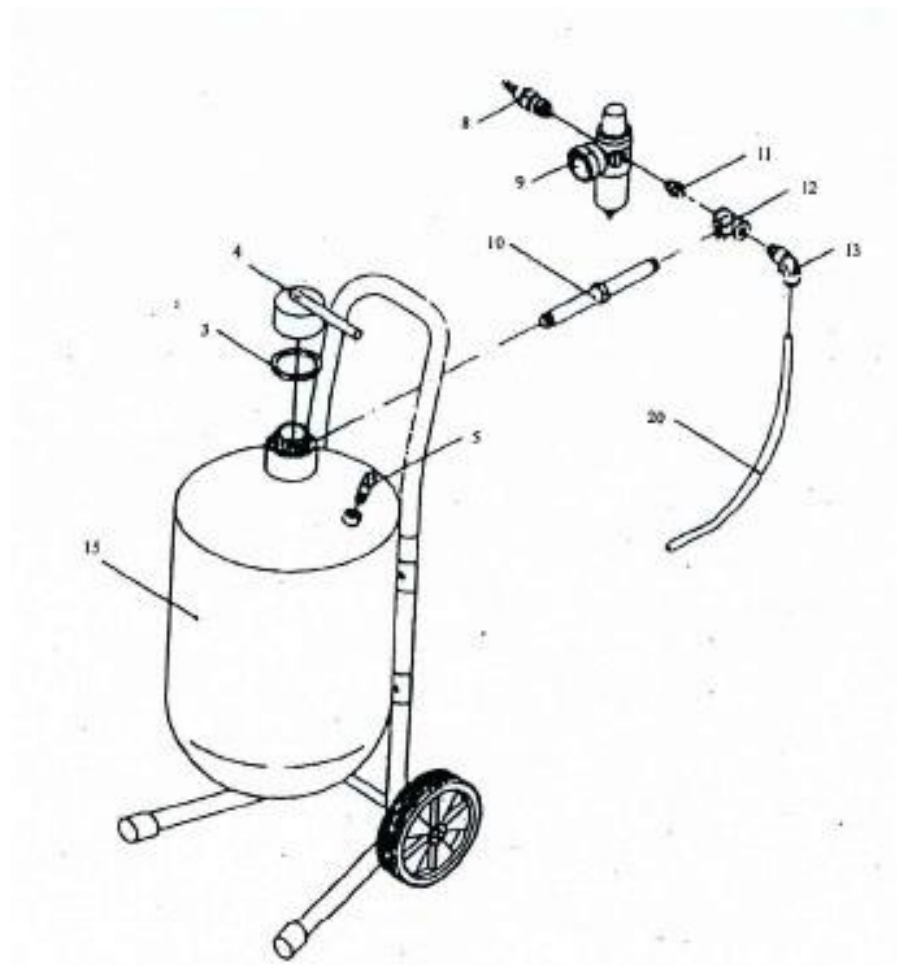
4. Push the hose onto the hose adaptor (23) nipple and tighten the hose clamps very securely.
5. Attach the abrasive metering valve (30) to the side hole of the intake manifold (12).
6. Attach the elbow connector (13) and the hose adaptor (23) to either remaining hole of the intake manifold (12).
7. Wind the assembled abrasive metering valve (30) into the bottom of the tank (15).
8. Screw the other hose adaptor (23) into the blast gun valve connector (33) and the nipple connector (25) into the other end of the blast gun.
9. Push the narrow end of the nozzle (27) through the nozzle cap nut (28).
10. Attach the nozzle cap nut (28) to the remaining end of the nipple connector (32) sealing the joint between nipple connector (25) and nozzle (27) with the gasket (26).
11. Slide the hose clamps (22) over either end of the abrasive hose (21). Do not tighten clamps yet.
12. Push the ends of the abrasive hose (21) onto the two hose adaptors (23) and tighten the hose clamps very securely.



NOTE: Always use thread seal tape on all threaded (screw in) fittings.

13. Screw air connector (8) into the air regulator (9).
14. Screw nipple connector (11) into the other side of air regulator (11).
15. Attach intake manifold (12) to nipple connector (11), elbow connector (13) and joint pipe (10).
16. Attach whole assembly to the threaded hole in the top of the tank (15).
17. Screw the safety relief valve (5) into the relief valve threaded hole on the tank (15).
18. Screw the tank filler cap(4) onto the top of the tank sealing the joint with the o-ring(3)
19. Attach the ends of the air hose (20) to the elbow connectors (13) on the top assembly and the bottom assembly respectively.

NOTE: Always use thread seal tape on all threaded (screw in) fittings.



3. BEFORE USE

Prior to each use conduct a visual inspection checking for abnormal conditions, such as cracked welds, leaks, and damaged, loose, or missing parts.

To protect your air compressor from damage it may receive from sandblasting

- Keep the air compressor in a separate area, or
- Position the air compressor up-wind of the sandblasting.

4. OPERATION

Prior to each use conduct a visual inspection checking for abnormal conditions, such as cracked welds, leaks, and damaged, loose, or missing parts.

Abrasive Selection:

The type of media you choose will greatly influence the amount of time needed to clean a given surface area. Sandblasting materials include silicon carbide, alumina, bank sand and beach sand. However, bank and beach sand even if washed, will still contain shell, coral and organic materials. These absorb moisture much more readily than the other materials. As a result, the moisture in bank and beach sand frequently cause clogging of the sand metering valve.

If you decide to re-use sand or media, remember it does wear out. The sharp edges become rounder, and are less effective. It's at the point you should replace the batch of abrasive you are using.

Loading Abrasive:

- Check the abrasive is dry and won't clog the meter valve (30), sand outlet pipe (20), hose (21) or other components.
- Always wear personal protective gear.
- Disconnect the air supply.
- Depress the blast gun nozzle shut off valve to release all abrasive from hose.
- Release air pressure from tank via the pressure relief valve (5).
- Remove the filler cap (4) from the top of the tank.
- Insert the funnel (19) and pour the abrasive into the funnel. Be sure to load enough into the tank to do the job at hand. If it is a big job, fill the tank only $\frac{3}{4}$ full and reload as needed to finish the work.
- Note: if the humidity is 90-100% the water trap (9) won't be able to trap all of the moisture in a $\frac{3}{4}$ full tank. Reduce the amount of abrasive, load more frequently and empty the water trap frequently. This will reduce the possibility of clogging the bottom of the tank or line.
- With the correct amount of abrasive in the tank close the filler cap (4).
- Reconnect the air supply.
- Check for air leaks at the filler cap as you begin to pressurise the tank from the compressor.

Correct Air Pressure:

Pressure should not exceed 125psi. If pressure exceeds 125psi the safety relief valve (10) is designed to release the excess pressure. If this does not happen stop all work immediately and use the air compressor to reduce the excess pressure. Do not investigate the sandblaster's pressure until the pressure gauge (15) reads zero.

To Setup for Abrasive Blasting

Note: Start with all valves in closed position.

- a Point the sandblasting gun to a safe direction away from people, pets or anything around you that may be damaged by abrasive spray.
- b Press and hold sandblasting gun lever until air starts flowing through the nozzle
- c While pressing and holding the sandblasting gun, slowly open the abrasive control valve until abrasive material begins to flow out of the sandblasting gun
- d Adjust the abrasive valve to an appropriate position (about 45°) when desired amount of abrasive material is flowing through the trigger nozzle

To Begin Blasting

- a Choose a larger nozzle for a broader spray pattern. Choose a smaller nozzle for more focussed abrasive blasting
- b Adjust abrasive flow with the abrasive control valve
- c Be aware of abrasive clogging the system. Depressurise if necessary and replace the abrasive media with drier or cleaner abrasive media

To Stop Blasting

- a Whilst continuing to press and hold the sandblasting gun, turn the abrasive control valve to the closed position
- b When noticing only air is coming through the gun, stop the air flow by releasing the gun

To Release Pressure from Tank

- a When finished blasting, point the sandblasting gun in a safe direction away from people, pets or anything around you that may be damaged by direct or indirect spray
- b Switch off power to the compressor
- c Turn the abrasive control valve to the closed position whilst pressing and holding the sandblasting gun to expel remaining abrasive material from abrasive hose
- d Release air pressure via the safety relief valve
- e Disconnect the air supply hose from the sandblasting unit

Nozzle and Rubber Nozzle Replacement

- a Ensure air supply is disconnected from sandblaster
- b Whilst holding the sandblasting gun against spring pressure in the open position, unthread the knurled nozzle retaining collar of the sandblasting gun and remove the retaining collar, nozzle and seal
- c Insert the replacement nozzle into the retaining collar followed by the rubber seal, then thread the knurled nozzle retaining collar onto the sandblasting gun and tighten securely
- d Choose a larger nozzle for a broader spray pattern. Choose a smaller nozzle for a smaller more focussed abrasive blasting

Health Considerations:

- Protect yourself and those around you from 'overspray'. Remember that your mobile sand blaster is shooting powerful spray of abrasive material
- Do not point it at yourself or anyone around you
- Always wear personal protective equipment
- Wear a filter or mask over your mouth when operating this unit. You will create a cloud of abrasive material and debris which is dangerous to inhale
- Remove, cover, and/or protect anything around you that might be damaged from direct or indirect contact with the abrasive spray or particles.

5. STORAGE

This mobile sandblasting unit should always be stored in a dry indoor location on a level surface.

6. MAINTENANCE

Before opening the tank release the air pressure on the sand tank;

- Pull the pressure relief valve (5) and disconnect the air supply.
- Open the blast gun nozzle (24) to release pressure in the line.
- Open and empty the tank
- Check for worn abrasive hose and fittings. The abrasive control valve, manifold and all parts after the abrasive is ejected from the tank are subject to rapid wear due to the flow of abrasive media. Check for leaks, blistering, bulging or thinness of the hose. Replace all parts which appear worn immediately.

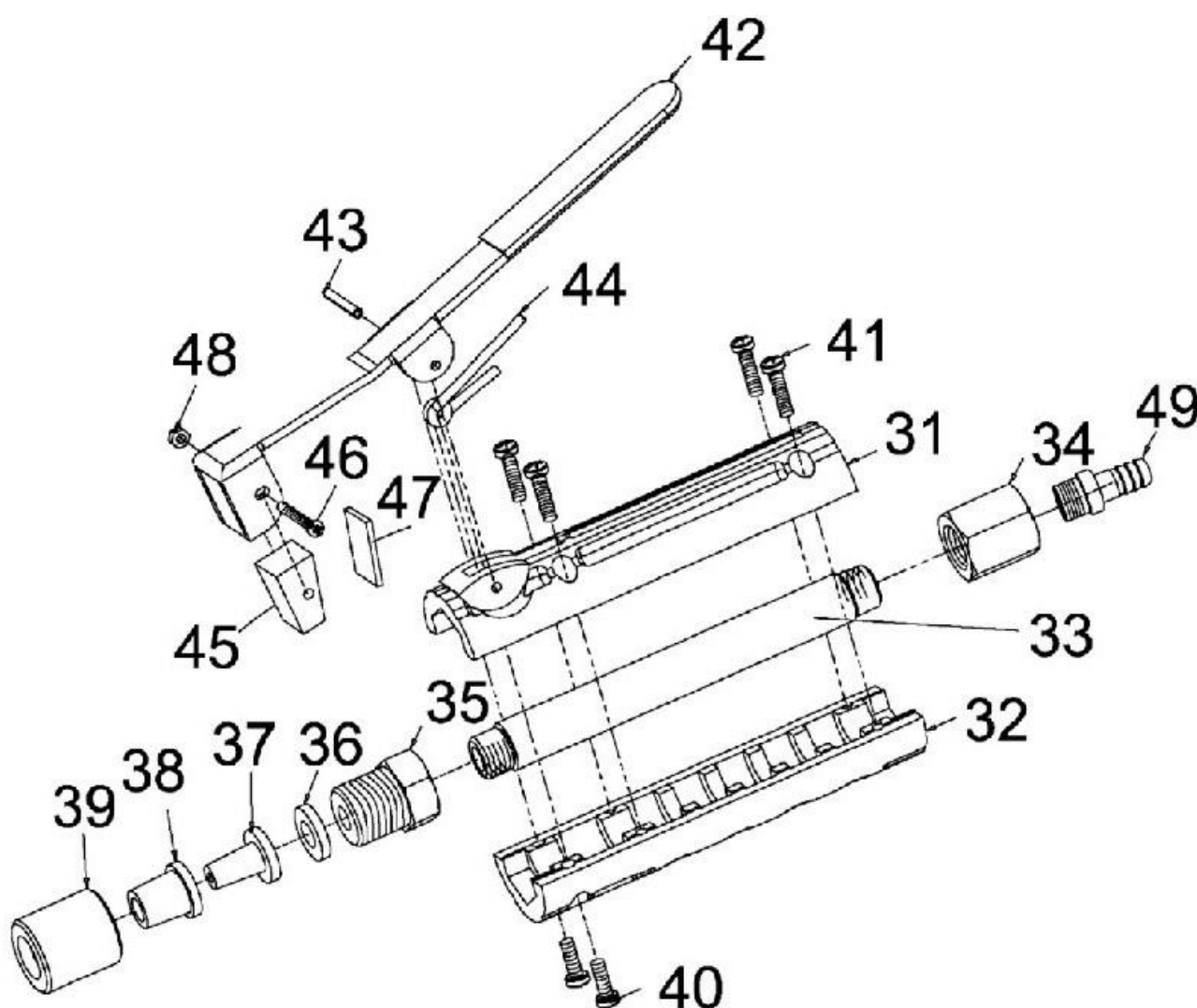
7. SERVICE & REPAIR

Any mobile sandblasting unit found damaged in any way, or found to be worn or operates abnormally should be removed from service until repaired by an authorised service agent. Owners and / or operators should be aware that repair of this product may require specialised equipment and knowledge. Only authorised parts, labels, decals shall be used on this equipment. Annual inspection of the mobile sandblasting unit is recommended and can be made by an authorised repair facility to ensure that your equipment is in optimum condition and that the equipment has the correct decals and safety labels specified by the manufacturer.

PARTS LIST SAFETY TRIGGER

Part #	Description	Qty
31	Body Upper	1
32	Body Lower	1
33	Metal Pipe	1
34	Intake Connector	1
35	Adaptor	1
36	Gasket	1
37	Ceramic Nozzle	4
38	Rubber Adaptor	4
39	Nozzle Cap Nut	1
40	Screw ST 4.2x16	4

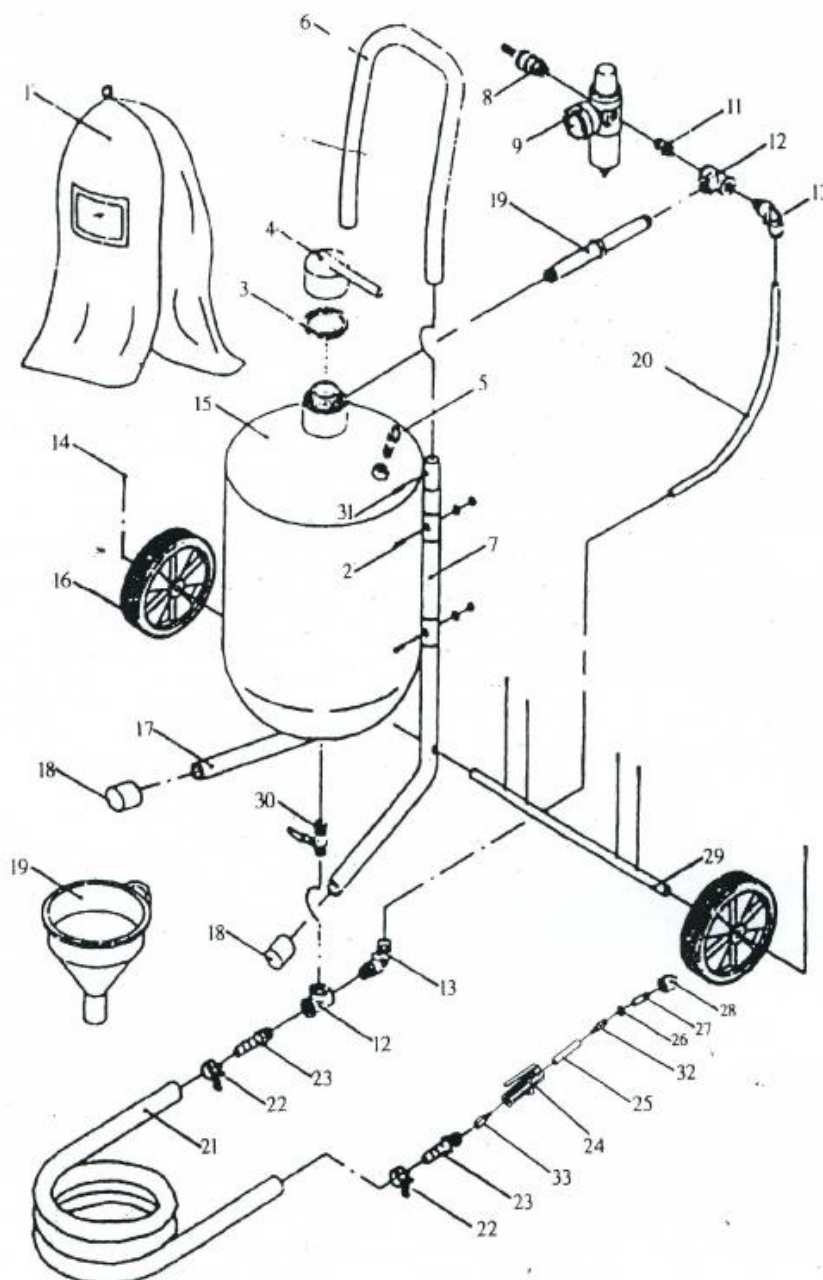
Part#	Description	Qty
41	Screw ST 4.2x12	2
42	On/Off Control Lever	1
43	Spring Pin	1
44	Spring	1
45	Rubber Pad	1
46	Screw M3x25	1
47	Hard Alloy Pad	1
48	Nut M3	1
49	Hose Adaptor	1



PARTS LIST

Part #	Description	Qty
1	Hood	1
2	Screws	4
3	O-ring	1
4	Tank Filler Cap	1
5	Safety Relief Valve	1
6	Handle Bar	1
7	Left Leg	1
8	Connector	1
9	Air Pressure Adjuster	1
10	Joint Pipe	1
11	Nipple Connector	1
12	Intake Manifold	1
13	Elbow Connector	1
14	Cotter Pin	6
15	Tank	1
16	Wheel	2
17	Right Leg	1

Part#	Description	Qty
18	Leg End Cap	2
19	Funnel	1
20	Air Hose	1
21	Abrasive Hose	1
22	Hose Clamp	2
23	Hose Adaptor	2
24	Blast Gun	1
25	Nipple Connector	1
26	Gasket	1
27	Nozzle	1
28	Nozzle Cap Nut	1
29	Axle	1
30	Abrasive Metering Valve	1
31	Self Tapping Screw	2
32	Nipple Connector	1
33	Blast Gun Adaptor	1



WARRANTY

Tradequip products have been carefully tested and inspected before shipment and are guaranteed to be free from defective materials and workmanship for a period of 12 months from the date of purchase except where tools are hired out when the guarantee period is ninety days from the date of purchase.

Should the machine develop any fault, please return the complete tool to your nearest authorised warranty repair agent or contact TQB Brands Pty Ltd Warranty team – warranty@tqbbrands.com.au.

If upon inspection it is found that the fault occurring is due to defective materials or workmanship, repairs will be carried out free of charge. This guarantee does not apply to normal wear and tear, nor does it cover any damage caused by misuse, careless or unsafe handling, alterations, accident, or repairs attempted or made by any personnel other than the authorised TQB Brands Pty Ltd repair agent.

This guarantee applies in lieu of any other guarantee expressed or implied and variations of its terms are not authorised.

Your TQB Brands Pty Ltd guarantee is not effective unless you can produce upon request a dated receipt or invoice to verify your proof of purchase within the 12 month period.

Consumer Guarantee

Our goods come with a guarantee that cannot be excluded under the Australian Consumer Law. You are entitled to a replacement or refund for a major failure and compensation for any other reasonably foreseeable loss or damage. You are also entitled to have the goods repaired or replaced if the goods fail to be of acceptable quality and the failure does not amount to a major failure.



All images and illustrations shown are for reference purposes only. All information, specifications and illustrations in this manual are based on the latest information available at the time of publication and are subject to change without notice. The information in this manual is periodically revised to ensure the latest information is included. Download the latest version of this manual and other related technical documentation from www.tqbbrands.com.au.