

Owners Manual

Product Code: 3027

**MADE FOR THE
TRADE**



BLASTING CABINET



Specifications:

- Cabinet Capacity: 110 Litre
- 4 Ceramic Nozzle Tips: 4.5, 5.0, 6.0 & 7.0mm
- Maximum Media Capacity: 20kg
- Inlet Fitting: 1/4" NPT
- Operating Air Pressure: 60 - 110psi
- Compressor Air Supply Requirement: 15-25CFM @ 80 psi (optimum delivery dependent on tip size)
- View Window: 270x570mm
- Overall Dimensions: 710(H) x 660(L) x 460(W)mm
- Nett Weight: 26.5kg
- Carton: 760 x 490 x 720mm
- Gross Weight: 31kg
- Door opening dimensions (mm): 418(bottom) x 360(RH side) x 105(top) x 372(diagonal) x 165(LH side)
- Not to be used with soda or walnut shell

About the TradeQuip brand

The 'TradeQuip' brand of workshop equipment, is designed for use in a demanding workshop environment by professional users. With proven and trusted "Made for the Trade" reliability, 'TradeQuip' branded products offer the very best in performance for an affordable price. All backed by a 1year trade guarantee across 1,000+ distributors Australia wide.



WARNING

IMPORTANT: READ ALL INSTRUCTIONS BEFORE USE



WARNING

The instructions and warnings contained in this manual should be read and understood before using or operating this equipment. Do not allow anyone to use or operate this equipment until they have read this manual and have developed a thorough understanding of how this equipment works. Failure to observe any of the instructions contained in the manual could result in severe personal injury to the user or bystanders, or cause damage to the equipment and property. Keep this manual in a convenient and safe place for future reference.

Whilst every effort has been made to ensure accuracy of information contained in this manual, the TQB Brands Pty Ltd policy of continuous improvement determines the right to make modifications without prior warning.

CONTENT

WARNING..... 2

CONTENT..... 2

STANDARD OPERATING PROCEDURE 3

ASSEMBLY, OPERATION, PREVENTITIVE MAINTENANCE 4

TROUBLESHOOTING..... 6

PARTS DIAGRAM 7

PARTS LIST..... 7

WARRANTY 8

STANDARD OPERATING PROCEDURE

DO NOT use this machine unless you have been trained and assessed to a competent level in its safe use and operation, and have been given permission to use this



Safety glasses must be worn when operating this equipment



Long loose hair must be contained when operating this equipment



Safety footwear must be worn when operating this equipment



Close fitting/protective clothing must be worn when operating this equipment



Rings and jewellery must not be worn when operating this equipment

PRE-OPERATIONAL SAFETY CHECKS

- Any Blasting Cabinet will produce a powerful flow of abrasive particles. To avoid personal injury and property damage, study this manual thoroughly before assembling, operating or servicing this blast cabinet.
- During operation, do not expose the hands or skin directly in the line of the blast nozzle.
- Ensure all components seal properly after assembly.
- Avoid moisture in the air lines and abrasive.
- Disconnect the cabinet from the air supply before changing accessories or attempting to install, service, relocate or perform any maintenance.
- Check hoses and air lines for weak or worn condition before each use. Make sure all the connections are secure before use. Replace or repair damaged parts. *Use recommended parts only. Non authorised parts may be dangerous and will invalidate the warranty.*
- Dust can be created when you sweep, blast, cut, drill or grind materials such as wood, paint, metal, concrete, cement, or other particles. This dust often contains chemicals known to cause cancer, birth defects, or other reproductive harm. Always wear personal protective gear.
- Keep the Blasting Cabinet clean for best and safest performance.
- Locate the Blasting Cabinet in an adequate working area for its function, keep area clean and tidy and free from unrelated materials, and ensure there is adequate lighting.
- Ensure all non essential persons keep a safe distance whilst the cabinet is in use.
- Fire or Explosion Hazard! DO NOT USE a media blaster around combustible or flammable liquids, dusts, gases, oily rags, or other materials that can explode or burn quickly. Some abrasives create sparks when they hit metal. Abrasives similar to aluminium oxide may generate static electricity sparks which may cause fires or explosions in an unsafe environment.
- DO NOT use above 70 watt, 12 volt light bulb.
- DO NOT expose hands or skin directly in the line of the blasting gun's nozzle during operation.
- DO NOT point the blasting gun at anyone or objects.
- DO NOT cover the rear air inlet during operation.
- DO NOT operate unit if damaged.
- DO NOT allow untrained persons to operate the Blasting Cabinet.
- DO NOT exceed the maximum operating pressure (120PSI) of the Blasting Cabinet.
- DANGER:** Static electricity shocks can be painful. Always wear leather or rubber soled shoes or boots and stand on the ground to avoid static electricity. A grounded wire attached to the media blast gun will also safely minimise the static electricity.

INTENDED USE

Blasting work using recommended abrasive media and/or glass beads to clean and abrade a surface, typically metal, of any rust, paint or other unwanted surface materials.

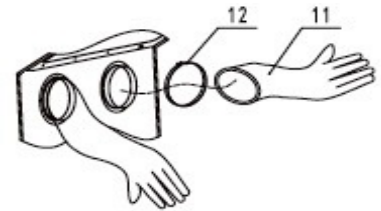
ASSEMBLY, OPERATION, PREVENTITIVE MAINTENANCE

1. FEATURES

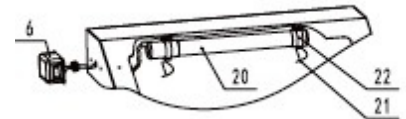
The TradeQuip Benchtop Blasting Cabinet is perfect for a wide variety of surface preparation jobs such as removing paint, scale, rust and oxidation. One-piece construction means there are no seams to leak, keeping the blasting operation contained inside the cabinet. Includes trigger-controlled blast gun with 4 different size nozzles, 450mm rubber blast gloves and protective window underlay.

2. ASSEMBLY

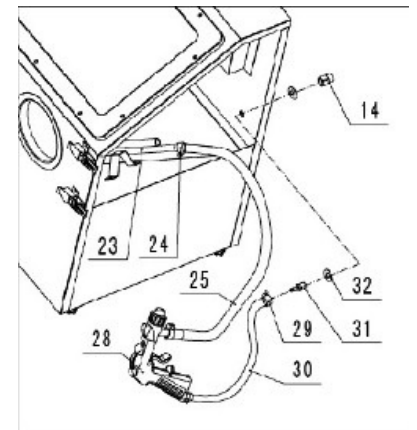
1. Secure the glove (11) with the glove clamp (12) onto the front panel as illustrated.



2. Push the fluorescent light (20) forward into the light clip (22). Ensure to lock both sides with light clips.



3. Press the other end of the air hose (30) fully onto the barbs of the air hose connector (31). Place and securely tighten an air hose clamp (29) around the section of hose covering the barb.



4. Connect the siphon hose (25) onto the sand suction tube (23) tighten with the siphon hose clamp (24).

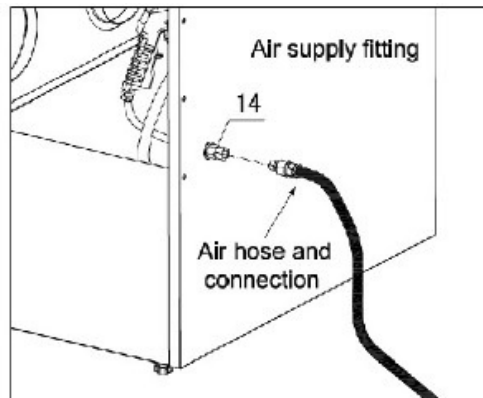
3. BEFORE USE

Prior to each use conduct a visual inspection by checking for abnormal conditions, such as cracked joints and damaged, loose, or missing parts.

4. OPERATION

Follow these instructions prior to connecting air to the sandblasting cabinet.

1. Place the cabinet on a suitable workbench and mount four adjustable foot pads (17) onto the bottom of the cabinet.
2. Connect the air supply (maximum 120PSI) to the air fitting (37) on the back of the cabinet.



3. Check if there are any leaks. If any leaks repair as needed with Teflon tape.
4. Plug the 12V power transformer into a 240V wall outlet. Ensure the switch is in the **OFF** position, plug the other end of the 12V power supply cord into the switch box (6) on the cabinet.
5. Check if the light works.
6. Attach the plastic film (4) to the inside surface of the glass (3).
7. Eye protection must be worn before filling abrasive media. Fill approximately 10 Litres of abrasive media into the tank of the cabinet.
8. DO NOT cover the vent tube end of the suction tube. Excessiveness will cause ineffective performance.
9. Close the cabinet door (19).
10. Move the blast stream continuously over the part in an even and circular motion.
11. It is recommended that you set up a vacuum dust collector (not included) to remove media dust while blasting. Attach the vacuum hose through the air outlet tube socket (9). When using a vacuum dust collector, clean the filter periodically to maintain good suction and effectiveness of the vacuum. Use the appropriate vacuum for the job.

5. STORAGE

This TradeQuip Blasting Cabinet should always be stored in a dry location.

6. MAINTENANCE

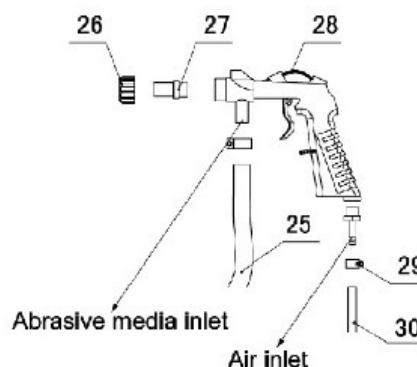
Replace or repair damaged parts. Use recommended parts only. Non authorised parts may be dangerous and will invalidate the warranty.

Disconnect the Blasting Cabinet from the air supply and electrical outlet before performing maintenance.

Cleaning: Clean the Blasting Cabinet and parts with a soft cloth. DO NOT use solvents to clean. Clean inside the cabinet regularly for best and safest performance.

Avoiding Block: Moist media will cause the nozzle to block. To dislodge the media use a drill bit to clean the nozzle.

Blasting Gun Connection: To replace the blasting gun (28) ensure not to reverse the air inlet and media inlet. Connect inlet as below;



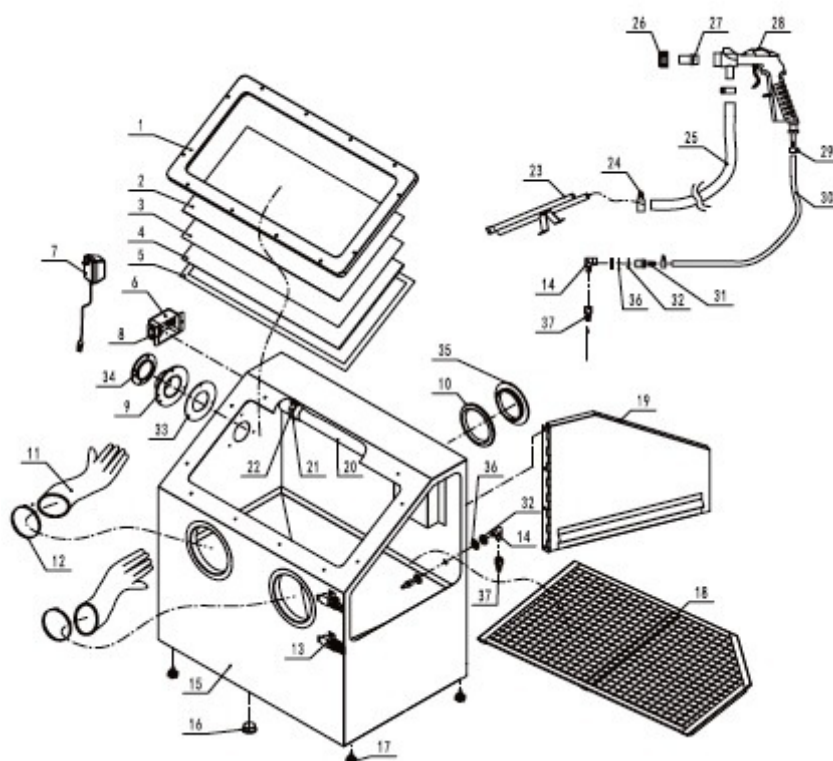
7. SERVICE & REPAIR

Any TradeQuip Blasting Cabinet found damaged in any way, or found to be worn or operates abnormally should be removed from service until repaired by an authorised service agent. Owners and / or operators should be aware that repair of this product may require specialised equipment and knowledge. Only authorised parts, labels and decals shall be used on this equipment. Annual inspection of the sandblasting cabinet is recommended and can be made by an authorised repair facility to ensure that your equipment is in optimum condition and that the equipment has the correct decals and safety labels specified by the manufacturer.

TROUBLESHOOTING

Symptom(s)	Possible Causes	Solution(s)
Excessive dust in the cabinet	Exhaust vent or air flow block. Air fittings and connections loose. Overload abrasive media inside of the cabinet.	Clean the vent and keep it away from any wall. Tighten fittings and make sure all the connections are secure. Remove the excessive media.
Improper speed or Inefficient blast	Abrasive media worn. Pressure too low.	Replace media. Increase inlet pressure and make sure control valve is fully opened.
Gun will not shut off. Trigger stuck.	Damaged o-rings in air valve.	Remove and replace o-rings.

PARTS DIAGRAM



PARTS LIST

Part	Description	Qty
1	Window Frame	1
2	Plastic Top	2
3	Glass	1
4	Plastic Film	5
5	Foam Pad	1
6	Switch Box	1
7	Switching Adapter	1
8	Switch	1
9	Air Outlet Tube Socket	1
10	Rear Inlet Retainer	1
11	Gloves (pair)	1
12	Glove Clamp	2
13	Latch	1
14	Elbow Coupler	1
15	Tank	1
16	Plastic Plug	1
17	Adjustable Foot Pad	4
18	Grate	1
19	Cabinet Door	1

Part	Description	Qty
20	Fluorescent Light	1
21	Nylon Cable Tie	2
22	Light Clips	2
23	Sand Suction Tube	1
24	Siphon Hose Clamp	2
25	Siphon Hose	1
26	Nozzle Nut	1
27	Ceramic Nozzle	4
28	Sandblasting Gun	1
29	Air Hose Clamp	2
30	Air Hose	1
31	Air Hose Connector	2
32	Flat Washer	2
33	Exhaust Pipe Gasket	1
34	Exhaust Pipe Cover	1
35	Back-inlet Cover	1
36	Air Inlet Gasket	1
37	Air Fitting	1

WARRANTY

TradeQuip products have been carefully tested and inspected before shipment and are guaranteed to be free from defective materials and workmanship for a period of 12 months from the date of purchase except where tools are hired out when the guarantee period is ninety days from the date of purchase.

Should the machine develop any fault, please return the complete tool to your nearest authorised warranty repair agent or contact TQB Brands Pty Ltd Warranty team – warranty@tqbbrands.com.au.

If upon inspection it is found that the fault occurring is due to defective materials or workmanship, repairs will be carried out free of charge. This guarantee does not apply to normal wear and tear, nor does it cover any damage caused by misuse, careless or unsafe handling, alterations, accident, or repairs attempted or made by any personnel other than the authorised TQB Brands Pty Ltd repair agent.

This guarantee applies in lieu of any other guarantee expressed or implied and variations of its terms are not authorised.

Your TQB Brands Pty Ltd guarantee is not effective unless you can produce upon request a dated receipt or invoice to verify your proof of purchase within the 12 month period.

Consumer Guarantee

Our goods come with a guarantee that cannot be excluded under the Australian Consumer Law. You are entitled to a replacement or refund for a major failure and compensation for any other reasonably foreseeable loss or damage. You are also entitled to have the goods repaired or replaced if the goods fail to be of acceptable quality and the failure does not amount to a major failure.



All images and illustrations shown are for reference purposes only. All information, specifications and illustrations in this manual are based on the latest information available at the time of publication and are subject to change without notice. The information in this manual is periodically revised to ensure the latest information is included. Download the latest version of this manual and other related technical documentation from www.tqbbrands.com.au.